

Windrush:

75th anniversary **p11**

Festival fever: Ealing
Summer is back **p19**

A helping hand:
Community hubs **p32**

Party in the park

Double-page
coronation special
p6-7

WIN
Festival
tickets
p21

Hey! Broadband

Sign up
heybroadband.co.uk

Live beyond limits...

Stream, play, work & download.

- Up to 20x faster than traditional broadband*
- Unlimited devices
- Free installation & router

* Average UK broadband download speed is 50Mbps - Ofcom, 2021.

From
£23
a month



Call free
0808 168 1616



SUMMER23 EDITORIAL

It is set to be another eventful summer with lots of things to do across the borough to fill the weeks and months ahead. And best of all, there is something to suit everyone's budget.

Many of us are already in the summer spirit and, judging by the amazing King's Coronation street party photos you've been sending in, it seems lots of you enjoyed the revelry in the borough's parks too.

And the fun doesn't stop there. The Ealing Summer Festivals are back again to brighten up your day, there's more about that on pages 19-21, and other low-cost activities you can get involved in (p22-23).

Read about the future plans for Perceval House (p15), and starting your own business (p24-25).

Have a great summer.

Verity Adams

DEPUTY EDITOR

CONTENTS

- | | |
|---|---|
| 4 UP FRONT
Local plan update and more | 22 SUMMER ACTIVITIES
Fun on a budget |
| 5 LEADER'S NOTES
Council leader Peter Mason | 24 STARTUP SCHOOL
Free business courses |
| 6 KING'S CORONATION
A picture special | 25 CREATIVE ENTERPRISE ZONE
Funding for local creatives |
| 9 UP FRONT
Vegas trip for pupils | 27 COMMUNITY GARDENS
Get involved |
| 11 WINDRUSH
Celebrating 75 years | 29 DIGGING IT
Hanwell garden project |
| 13 SCHOOLS PROGRESS
Measuring up well | 30 ALLOTMENTS
Growing to share |
| 15 PERCEVAL HOUSE
Future plans for council HQ | 32 COMMUNITY HUBS
Help with cost of living |
| 16 BUILDING THE FUTURE
Hundreds of new homes | 35 SHARED LIVES
Becoming a carer |
| 18 ART OF THE MATTER
Cultural renewal plans | 37 PROTECTING WOMEN
Reporting violence |
| 19 SUMMER FESTIVALS
What's on this year? | 38 COUNCILLORS |

Contributors: Samantha Chamberlaine, Cheryl Curling, Quinton Drawbridge, Iva Manova, Richard Nadal, Alex Sturrock (photography).

e [aroundealing.com](https://www.aroundealing.com)
t [@EalingCouncil](https://twitter.com/EalingCouncil)
f facebook.com/EalingLondon

PUBLISHER

Ealing Council, Communications, Perceval House, 14-16 Uxbridge Road, Ealing W5 2HL, Tel: 020 8825 5000

EDITOR

Richard Nadal, nadalr@ealing.gov.uk

ADVERTISING

advertising@ealing.gov.uk

Distribution: 138,000 copies.

Ealing Council does not accept responsibility for goods or services offered by advertisers. Opinion expressed in this magazine is not necessarily that of the council.

Please use your blue recycling bin when you dispose of this and other magazines.



1 There will be lots of fun, music and entertainment as **Hanwell Carnival** returns to Elthorne Park on Saturday, 17 June. The day kicks off with the parade, starting from Hanwell Community Centre at 11am. The main event takes place in the park in Boston Road from midday until 6pm. Entry is free. Visit hanwellcarnival.co.uk

2 Seven sporty students made the transatlantic journey from **Ealing to the USA** to represent the United Kingdom at a special event earlier this year. Children from Little Ealing Primary School, in Weymouth Avenue, travelled more than 5,000 miles to the bright lights of Las Vegas to take part in the NFL Pro Bowl Games. NFL Flag is a non-contact form of American football. The children played against teams from other countries including Ghana, Mexico and Canada. Visit aroundealing.com/news/sporty-students-go-to-las-vegas

3 The new **Mayor of Ealing**, Councillor Hitesh Tailor, was formally elected to the position at a meeting of the full council in May. The deputy mayor is Councillor Charan Sharma. They will hold the roles for one year. Read more in the autumn edition of Around Ealing.

4 Another set of projects put forward by community groups and residents are in the running to get funding to help them transform a space or provide a helpful service and turn an idea into a reality. Find out which projects the council's **Ealing Together Fund's** latest pot of money is being awarded to by visiting aroundealing.com/news/community-funding

speedread



L-R: Councillors Knewstub, Mason and Brett

Your new cabinet

Council Leader Peter Mason introduced his new cabinet at a meeting of the full council in May, including two new members: Councillors Louise Brett and Polly Knewstub.

- Deputy leader and cabinet member for climate action: Councillor Deirdre Costigan
- Cabinet member for decent living incomes: Councillor Louise Brett
- Cabinet member for thriving communities: Councillor Polly Knewstub
- Cabinet member for inclusive economy: Councillor Steve Donnelly
- Cabinet member for healthy lives: Councillor Josh Blacker
- Cabinet member for safe and genuinely affordable homes: Councillor Bassam Mahfouz
- Cabinet member for good growth and new housing: Councillor Shital Manro
- Cabinet member for a fairer start: Councillor Kamaljit Nagpal
- Cabinet member for tackling inequality and crime: Councillor Jasbir Anand

See pages 38-39 for a full list of the 70 councillors on Ealing Council.

A healthy start

Ealing Citizens' Tribunal held its first public meeting, with a focus on tackling health inequalities.

The tribunal is an independent body established to follow up on the recommendations of the Ealing Race Equality Commission (EREC). It aims to hear peoples' views and feedback on six priority areas: Participation and democracy; housing; policing; income and employment; education; and, of course, health.

Don't worry if you missed the first meeting in March and still want to take part in this important conversation. Look out for more dates to be announced for the next meetings and find out more by visiting dosomethinggood.org.uk

Leader's Notes

'A spectacular demonstration of community spirit'

Councillor Peter Mason
Leader of the council



The coronation of King Charles III and Queen Camilla was a spectacular demonstration of community spirit, and it was a real pleasure for me to celebrate it alongside you at events and celebrations across our incredible borough.

King Charles has spoken often about his commitment to serving the British people, and his work to support young people in particular is well-documented. As a council, we share these values and since I last wrote for *Around Ealing*, we have succeeded in taking a step towards improving the lives of those young people who are in our care – those who have been looked after by the council, or fostered - by making experience of care a protected characteristic.

It is deeply saddening that people with experience of care face discrimination and stigma, and that they are drastically overrepresented in the populations of people in British prisons and sleeping rough on our streets. So at Ealing we have pledged to be better Corporate Parents to the young people in our care, to make sure that they not only have their practical needs met, but also their emotional ones. We will listen to those young people, and we

will empower them to make sure that their opinions and insights are not only listened to, but acted upon.

INVESTING FOR THE FUTURE

We want to support all our young people – in fact, all our residents – to live healthy, fulfilled lives. To that end, we have recently announced progress on two incredibly important projects, the Young Adults Centre (YAC) in Southall, and Gurnell Leisure Centre.

We are investing £2.8 million in the YAC, after extensive consultation led to us changing plans to relocate the service. Young people and local residents alike were unanimous in their support for the service to remain in its current location. So we are focussing investment on an upgrade to the facilities, and work will begin over the summer.

Gurnell leisure centre will also see significant investment, so that all generations of Ealing residents can have access to a state-of-the-art, 50m swimming pool and exercise studio space.

WINDRUSH75

We will very soon be coming together to mark the 75th anniversary of the

arrival of the HMT *Empire Windrush*. While it was by no means the first ship to bring migrants from the West Indies to Britain, the Windrush has become symbolic of a generation of Caribbean and Commonwealth citizens seeking work and opportunity for their families. Since, the Windrush Generation has contributed endlessly to make Britain and our borough the incredible places they are, whether as the backbone of our public services, or to the richness of our diversity and culture.

Whilst we will be celebrating in true Ealing style, we will also remember the injustices faced by the Windrush Generation, on arrival in London and through to the present day, at the hands of landlords, the Home Office, employers or even educators. We will never stop fighting to ensure that everyone in Ealing, regardless of background, has the support and resources they need to achieve their potential.

I hope you enjoy reading about everything going on in our incredible seven towns in this instalment of *Around Ealing*.

 **CREATING**
GOOD JOBS

 **TACKLING**
THE CLIMATE CRISIS

 **FIGHTING**
INEQUALITY

Coronation celebrations

The coronation of King Charles III was celebrated across the borough – with 167 street parties, a big event in Walpole Park and fireworks in Acton and Northolt. Here is just a taste of the fun. Photos supplied by Alex Sturrock, Mickey Lee, Ela Kapoor and Louise Beeson. See another 40 photos at aroundealing.com/news/kings-coronation-pictures





NO CHANGES OVER SUMMER

Your usual collection day for recycling and rubbish, including communal bins, will NOT change over the August bank holiday. So, please carry on as normal. Thank you for recycling.

Please remember

- ✓ Place your bins out for collection at the edge of your property by 7am on your collection day
- ✓ Put your bins back after they have been collected, or they can cause an obstruction
- ✓ Check your collection schedule at www.ealing.gov.uk/collectionday

PLEASE DON'T MIX US UP

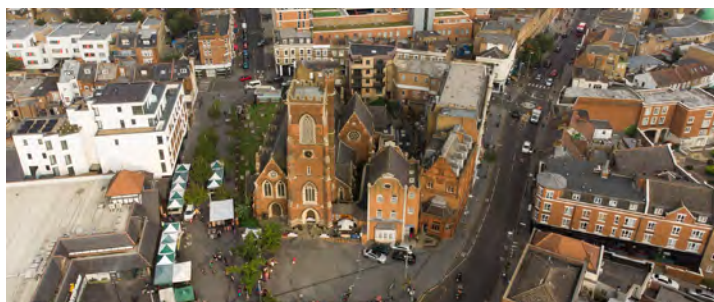
Your **BLUE BIN** is for household recycling only. All your recyclable items can be put in here. If your bin contains the wrong materials it will not be collected.

Your **BLACK BIN** is only for household rubbish that cannot be recycled. Rubbish must be bagged.

FOOD waste. Line your food waste bin with newspaper or use a compostable bag to help prevent smells and stop food sticking to the bin.



Thousands have their say



More than 13,000 responses were given by residents to the council's draft new Local Plan.

The plan sets out how life across all the seven towns in the borough might develop over the next 15 years – from climate and transport to open spaces and homes, and more.

Since the public consultation concluded in February, your feedback is being used to help to put together an updated version of the Local Plan – which the council will then ask your views on again.

Council leader Peter Mason said: "This process is a once-in-a-generation opportunity to have a say in how our home will develop over the next 15 years, in ways that touch almost every aspect of everyday life."

Rogue landlords

Two local landlords have been hit with huge bills, totalling more than £600,000, for illegally converting houses into multiple shoddy flats, which broke basic planning regulations.

Both landlords also ignored enforcement notices from the council's planning enforcement team when it was discovered that they did not have planning permission to use their properties as multiple self-contained flats.

Councillor Bassam Mahfouz, Ealing Council's cabinet member for safe and genuinely affordable homes, said: "Our planning enforcement team worked doggedly to pursue these two rogue landlords, who did not take their responsibilities seriously and profited from renting out cramped and substandard properties."

The two men were handed their penalty at a hearing at Isleworth Crown Court.



Read more at aroundealing.com/news

A fairer start

People who have experience of growing up in the care system will receive greater protection from discrimination, Ealing Council has pledged.

At a meeting of the full council in April, it was declared that experience of care will be made a 'protected characteristic' throughout the local authority.

It is against the law to discriminate against someone because of age; disability; gender reassignment; marriage and civil partnership; pregnancy and maternity; race, religion or belief; sex; or sexual orientation. These are known as protected characteristics of a person.

Council leader Peter Mason said: "It is the next step in our work to ensure that every child and young person in Ealing has a fair start in life, where they can lead happy and healthy lives."



Read more at aroundealing.com/news

A bright future

Southall's Young Adult Centre (YAC) is set for a bright future following a council decision to spend £2.8million to retrofit and renovate the building.

Following consultation with residents and the young people who use the centre, previous plans to redevelop the site will no longer be going ahead.

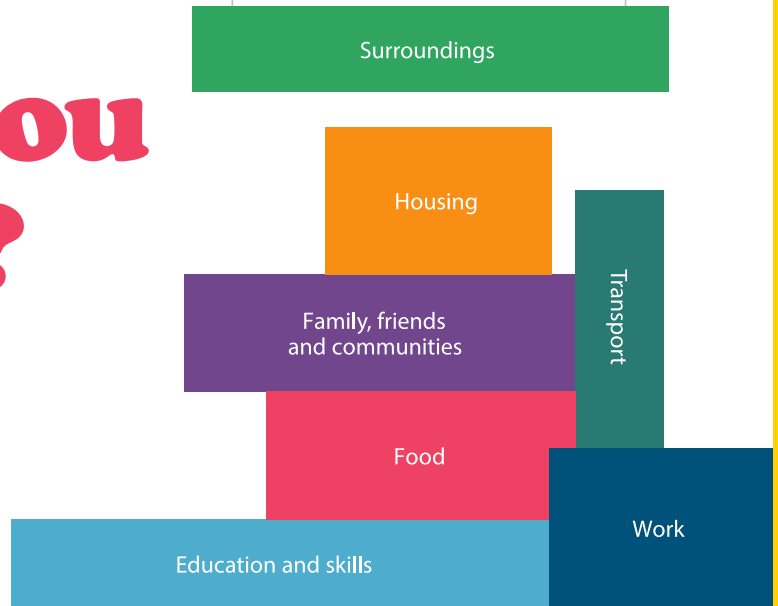
The current, tired building will be transformed into an environmentally friendly, safe and modern facility, allowing it to continue to be valued for many years to come.

There are also plans to upgrade the existing sound studio, replace and improve IT cabling and WiFi, create a new kitchen, remodel the interior to create better useable space including a gym and fitness area, and extend the community room to provide more space for partners and community use.



Read more at aroundealing.gov.uk/news/southalls-young-adult-centre

What makes you healthy?



Find out about plans for the health and wellbeing of your area in Together in Ealing: A new health and wellbeing strategy for everyone living in our borough at www.ealing.gov.uk/hwstrategy

The strategy focuses specifically on reducing inequalities between different communities, giving everyone the opportunity to reach their full potential. While diet, exercise, and a healthy lifestyle are important factors in a happy life, the strategy addresses the wider elements that can impact health. These 'building blocks of health and wellbeing' include: Housing, green spaces and the environment, transport, good jobs, financial support, accessibility of services, support from family and friends, and a sense of connection to community.

Opportunities to work together are coming soon.



Councillor Josh Blacker, Health and Wellbeing Board chair

"This strategy is a major step forward in improving the health and wellbeing of people in our borough, as we connect more closely with partner organisations, and work together to address wider factors that impact health and wellbeing from housing to good jobs, the quality of services, to improving the air we breathe, we want to see the residents of Ealing living healthier and happier lives, where everyone has the opportunity to reach their full potential."



75th anniversary of Windrush



Windrush Day on 22 June celebrates the diversity of our borough, London and the UK as a whole, by remembering the 1,027 passengers docked at Tilbury on board the Empire Windrush ship in 1948.

To commemorate its 75th anniversary, Ealing Council will be holding a series of special events for people to take part in, including local history talks, special displays, arts and crafts activities and much more.

Council leader Peter Mason said: "To mark this very special anniversary, and to express our gratitude to the first Windrush generation, we will be hosting a series of events this summer in recognition of the huge difference that they, and the generations that came after them, have made to this borough, and this country, to make it great.


"The events also offer a chance for us to reflect and remember those who suffered at the hands of the brutal slavery system, and to pay tribute to those who fought to abolish it,"

Last year, more than 300 people came together at the tropical gardens in Walpole Park to honour the

reinstatement and unveiling of two plaques to commemorate the Windrush generation and the abolition of slavery.

Founder of the Acton-based charity Descendants, Margaret Noel, said: "It is a momentous year that should be viewed proudly in British history. A lot of people came and made sacrifices, leaving their children back in the Caribbean to make a better life for their families – with some hoping to return. We mustn't forget all the hard work and sacrifices that were made at that time to benefit the whole community."

Descendants celebrates its 30th anniversary this year and will be having its annual achievements awards on 8 July. It is also hosting an exhibition at Pitzhanger Manor & Gallery this summer, showcasing works of art by young people. The theme is 'Expressing Identity'.

 For more information about the borough's Windrush events visit aroundealing.com/news/windrush

Star student scoops prize

A Southall student has been presented with a special award for her Windrush essay during a VIP visit to her school.

Tisha, a pupil at Dormers Wells Junior School in Southall, wowed the judges with her entry in the Sam King Windrush Award competition sponsored by the Windrush Foundation.

Co-founder Arthur Torrington attended the assembly to present Tisha with her award.



Help to thrive

New facilities at Fielding Primary School in Ealing mean 50 specialist places have been created across the borough in the last year to help children with learning difficulties.

This has surpassed the council's target of providing 40 new school places for children with special educational needs and disabilities (SEND) in 2022/23.

And, to mark the occasion, council leader Peter Mason and the council's cabinet member for a fairer start, Councillor Kamaljit Nagpal, visited the school in Wyndham Road.

Its 'additional resource provision' (ARP) will provide 27 new primary school places for children from reception to year 6, who have speech, language or communication difficulties, including autism and associated learning difficulties.

HELPING WITH INDEPENDENCE

Alison Trott, a specialist teacher at Fielding Primary, runs its new ARP. She said: "The ARP will allow for classes of up to nine pupils, and the opportunity to learn alongside pupils in the main school. The pupils will gradually work towards being independent and spend more time in, and mix, with the main school.

"The ARP is housed in a new, single-story building with three classrooms

and extra support rooms, with an outdoor play area and sensory garden on the site."

'LEARNING IN SMALL GROUPS'

Councillor Nagpal said: "The new building allows for children to receive specialist teaching, learning in small groups, remaining integral and visible members of an inclusive school community. This is in line with our commitment to a fairer start, making sure that our children's needs are met and that our young people with special educational needs and disabilities are supported not only to survive at school, but to thrive."


There are now ARPs at eight primary schools (Beaconsfield, Coston, Drayton Green, Fielding Havelock, West Acton, Willow Tree, Selborne), four high schools (Elthorne, Greenford, Twyford and William Perkin), and plans for two more to meet secondary school needs at Northolt and Villiers.

Councillor Mason said: "This fantastic project at Fielding is part of our commitment in the Council Plan to ensure that all Ealing children have



access to the best schools in their local communities, regardless of their backgrounds and whether they have special educational needs or disabilities. As a council, we will continue to create schools that are greener and more modern and that set a standard of excellence for all London to follow."

SUPPORT FOR CHILDREN WITH SEND

More information about how the council supports children with special educational needs and disabilities, and their families, can be found online at www.ealingfamiliesdirectory.org.uk by selecting 'Local offer'. 



Top of the class

The borough's schools are measuring up well according to the latest government Progress 8 statistics, which calculates the improvements in children's education.

With this year's GCSE exams coming to an end, pupils can put down their pens and enjoy the break before results are released later this summer.

Teachers, too, can take the chance to reflect upon their hard work and achievements this academic year, as they strive to maintain the same level of success that the borough's schools have basked in this year.

Not only do Ealing schools achieve well above the national on all academic measures, Ealing has been crowned the best performing local authority in the country in 2022 for progress that pupils made between the end of primary school and end of secondary school (KS2 to GCSE). This is known as the progress 8 score and is measured across 8 GCSE subjects.

Ealing's score is 0.53. This means Ealing pupils, on average, made half a grade's more progress than their peers nationally between Year 6 and Year 11, according to the government's latest league tables.

Three of Ealing's 15 state-funded schools were in the top 1% for progress 8 nationally. There were six in the top 5%, eight in the top 10% and 10 in the top 25%.

The provisional data was published by the Department for Education in October 2022 and finalised in February 2023. The statistics are based on summer 2022 exams.


The borough also came top of the class for the progress 8 score in 2019, the last time these results were published.

'A FANTASTIC ACHIEVEMENT'

Ealing Council's cabinet member for a fairer start, Councillor Kamaljit Nagpal, said: "This is a fantastic achievement and testament to both staff and students. The council is fully committed to supporting and improving our schools in Ealing, and to working with our school leaders to really tackle the things that matter. We want to make sure that no child or school is left behind, and every pupil in Ealing is supported to reach their potential."

"Now that exam season is coming to a close for another year, I would like to wish all the borough's pupils and teaching staff an enjoyable and restful summer. I know that everyone will have done their best and I hope this is reflected yet again in next year's progress scores."

Ealing Council supports local schools and educational institutions through the Ealing Learning Partnership, a collaboration which promotes educational excellence, inclusion and wellbeing for all learners. Partnerships like this between the council and other important local organisations are important, and enable headteachers and senior leaders to better represent Ealing's children and young people.

Chair of the partnership and headteacher at Hambrough Primary School in Southall, Louise Singleton, added: "Collaborative work across all schools is always going to be the best way because it's shared experience, shared expertise and shared professionalism solving contextual based challenges together." 

Calling all landlords!

Looking for a hassle-free, low cost way to let your property?

Want to find out more?

Get in touch today on
020 8825 8765 or
landlords@ealing.gov.uk

Try Ealing Council's direct let scheme

This quick and easy service takes the hard work out of finding tenants without asking you to surrender control of your property. We pair you with tenants who are looking for a new home and leave you to self-manage your property.

- No commission or finder's fees
- Generous financial incentives
- Simple and easy to use



Are you looking for good quality furniture or electricals?

Or do you have some you want to donate?



We recycle quality unwanted furniture and electricals. We provide paid employment and training to disadvantaged people and excellent quality furniture at fantastic prices to you. Visit our stores today!



Hayes: 0208 797 9505
3-7 Willow Tree Lane, UB4 9BB
www.wearetrinity.org.uk
facebook.com/trinityfurniturestore



Coach trips

Pick-up points in Acton,
Ealing, Hanwell,
Greenford & Northolt

Days out from only £26.50

Coach Trips from London Ltd. 2023 Schedule

Sat 1 July Southend on Sea - visit the pier and fun fair
Saturday 15 July Shanklin beach, Isle of Wight
Sunday 23 July Henley on Thames river cruise
Thurs 27 July Cotswolds tour featuring Sezincote
Tues 8 August Sandringham or Hunstanton beach
Saturday 19 August **THE SOUND OF MUSIC** at the
Chichester Festival Theatre (or harbour cruise)
Sunday 27 August Bournemouth or Christchurch
Sunday 17 September Kennet & Avon canal trip
Sat 23 September Burghley House & Stamford
Sun 8 October Sussex Villages with Sunday roast
Sat 21 October The National Arboretum & Lichfield
Sun 5 November London to Brighton Veteran cars run
Saturday 2 December Birmingham Christmas Market
Sat 9 December Polesden Lacey (decorated for Xmas)

Most day trips in 2023 cost between £26.50 and £39.50 depending on what is included. Ask for our brochure.
Booking conditions apply - see brochure back page
Also available: short breaks to Yorkshire and Ireland

Air purification system installed on coaches

★ To book seats please telephone 07557 026088 ★

Council to stay in HQ

Later this year, you will be asked your views on possible changes to the council's office headquarters, Perceval House.



In April, Ealing Council and developers Vistry Group announced a change of plans for the site in Uxbridge Road, Ealing, after mutually deciding not to progress with a redevelopment of it.

Instead, the council will now consider a range of options for the site. These include an idea to 'retrofit' the six-floor building in Ealing Broadway to make it more environmentally friendly and to make some of it available to residents and local businesses to use.

This would potentially see the ground floor opened up for community activities, and space made available for local businesses to lease. The three remaining floors might then be retained as office space for council staff and councillors.

'RETROFIT-FIRST APPROACH'

Council leader Peter Mason said: "When this administration inherited

the old plans for Perceval House, it was clear that the proposals represented a huge change for the borough, one with a big financial commitment and many years of disruption. With the old scheme now at an end, we can turn our minds to reimagining a new council building, open to the public, accessible to resident's needs, with the community at the heart of it.

"If we took a retrofit first approach to our renewed proposals for our council HQ, we would be fulfilling our pledge to do all we can to tackle the climate crisis and be carbon neutral as a council by 2030. We equally remain committed to building genuinely affordable homes, reducing car use, and supporting the transition to renewable energy, so we're going to take some time to reconsider how we do just that while keeping Perceval House open."

WHY THE CHANGE OF PLAN?

Since the redevelopment project was originally proposed in 2014, significant events have substantially changed the risks and viability of the scheme.

These challenges have included a big increase in inflation in the UK, and a continuing rise in the costs of materials and construction. And, most recently, an important and vital fire safety requirement has proved very difficult to incorporate into the existing designs.

"Openness and inclusion will be at the heart of our renewed approach to Perceval House," added Councillor Mason. "Very soon, we will start engagement with both residents and staff to open-up the building, creating a modern, accessible and welcoming environment for the whole community."



Read more at
aroundealing.com/news

Closing the gap

Bricks are being laid at five more sites, as the council's homebuilding programme continues apace, to help tackle an affordable housing crisis that has left Ealing as one of the most expensive places to live in London.

The council's Shaping Ealing consultation last year showed that a lack of genuinely affordable housing was a concern in all seven of the borough's towns.

This feeling among residents who took part in the survey reflects the facts. Ealing is a very popular place to live, with outstanding schools, parks, and transport links, but that pushes up the cost of housing. The average house price is now sixteen times higher than the average earnings of local households. This rate is significantly above the London average.

BUILDING FOR THE FUTURE

We reported in the last edition of the magazine on how the council was working on preventing homelessness (read more at [aroundealing.com/news/aspect-house](https://www.aroundealing.com/news/aspect-house)), but it is also trying to do its bit to tackle the housing crisis at source: By building new homes.

Last year, the council exceeded its



A flat in Northolt built as part of the council's housebuilding programme

four-year plan of providing 2,500 new genuinely affordable homes at sites across the borough since 2018, both by directly building homes itself and by insisting on a proportion of homes at private developments are let at affordable rents. And it is due to have started more than 1,500 more between 2022 and 2024.

In fact, Ealing Council is leading London in terms of council homebuilding. In data published by the Greater London Authority (GLA), Ealing is consistently among the top performing boroughs in London for new, genuinely affordable homes.

625 NEW HOMES

And, just recently, work began on more than 625 new council-owned homes. Of these, 502 will be to let. This will

include 71 homes specifically designed for older people on the Steyne Road estate in Acton; a five-storey block of 84 homes at the site of the former Northolt Grange community centre; 104 new homes at the Golf Links regeneration; 218 new homes at the High Lane regeneration and a four-storey block of 26 flats in Sussex Crescent, Northolt. All will be let at rents priced to suit the budgets of local people on low to moderate incomes.

Eight other new homes at Northolt Grange, 25 new homes at Golf Links Phase 3 and 90 further homes at Steyne Road will be available as shared ownership – to help people get on the housing ladder. A further 276 homes at High Lane and 27 at the Steyne Road estate will be sold to help cover the cost of the new homes to rent. As well as



Open space at recent regeneration at Copley in Hanwell

the proceeds of these sales, the council homes are part-funded by a proportion of a £86million grant from the GLA.

Work is under way at all five sites and all, except for High Lane, is likely to be completed between late 2024 and early 2026. High Lane will take longer because it is being carried out over three phases.

CLOSING THE GAP

Councillor Peter Mason is the leader of the council. He said: "London's affordable housing crisis has left many hardworking people without a place to call their own. That's why we're running one of London's biggest council homebuilding programmes, and I am pleased that these sites will be progressing over the next few years."

Councillor Shital Manro, cabinet

member for good growth and new housing, added: "We know what a huge difference these safe, secure, and energy-efficient flats and houses will make to the families who move into them. From Northolt to Acton, and everywhere in between, we're delivering award-winning new homes that will help us close the gap between supply and demand."

RENTING TROUBLE

It's not just hard to buy a home. Renting is becoming ever tougher – with supply of privately rented housing falling, and costs rising. This is further driving the need for more genuinely affordable homes.

The average Ealing resident in the private rental market pays just under half of their pay on housing, compared to 26% in the rest of England. These rental costs increased an average of 45% across the borough's wards (or neighbourhoods) over the last 5 years (April 2018-April 2023) – with some of those wards experiencing rises of 83%. Because of the current steep levels of inflation in the country, rents have risen 15% this year alone.


So, you could say it is not too much of a surprise to find out there

are thousands of residents on Ealing Council's housing waiting list.

ARE YOU A LANDLORD?

If you are a landlord and are interested in getting help from the council to let your property, email landlords@ealing.gov.uk

HOMELESSNESS

If you are immediate risk of homelessness, contact the council's housing advice service on 020 8825 8888 or email housadv@ealing.gov.uk 

New homes

2,576 genuinely affordable homes provided in the borough by the council and partners between 2018-2022

1,186 genuinely affordable homes started by the council and partners in 2022-23

500 genuinely affordable homes due to be started by the council and partners in 2023-24



Arts and minds

A five-year action plan to boost local arts, culture and the creative industries in our borough was announced this spring.

Ealing Council unveiled its cultural manifesto at a special event in Park Royal.

It was put together by a culture task group, which included representatives from Arts Council England, the Greater London Authority's culture team and the University of West London.

Last year, the council travelled with a creative installation to each of the borough's seven towns to encourage local people to have their say in shaping this cultural manifesto, through running an arts and culture survey and holding focus groups.

Council leader Peter Mason said:

"Our cultural manifesto is an ambitious plan to not only unlock the potential and creativity of everyone living in Ealing, but also to make it easier for the arts and culture sector to thrive.

"We have already achieved things we are incredibly proud of, such as investing in our heritage buildings Gunnersbury Park Museum and Pitzhanger Manor and Gallery; setting up a Cultural Education Partnership, so all our children and young people can access great art; adopting an arts charter for our schools; distributing half a million pounds in grants to our creative and digital businesses; and opening a creative Enterprise Zone in North Acton and Park Royal. We can't wait to build on these successes together with our residents, partners and creatives."

WHAT THE COUNCIL WILL DO

The council's three key priorities provide a framework for how it will look to start boosting culture:

- **Fighting inequality:** Local culture hubs in all seven towns will increase community empowerment, and support local talent

- **Creating good jobs:** Through the Cultural Education Partnership with schools, skills providers and employers. And via business and the creative industries through upskilling workshops and other activities (such as Creative Enterprise Zone, New Gen Festival)

- **Tackling the climate crisis:** Making local events and festivals more environmentally sustainable.



Read more at

aroundealing.com/leisure

Get involved

Are you a local artist or arts organisation? Join the arts and culture network by emailing culture@ealing.gov.uk

Festival fever

Ealing Summer Festivals is back to bring an explosion of colour, culture and community vibes. Set in the splendid Walpole Park, and elsewhere, get ready to start the summer holidays with a bang.

Acton Carnival brought to you by Artification

- Saturday 8 July, Acton Park,
- Carnival Procession: 10.30am from Crown Street, then Acton Park 12noon-7pm.
- TICKETS from £2.50, under 11s go free.

There will be a host of bright and vibrant performances at this year's Acton Carnival, with live music, DJs and an array of performers. There will also be a children's zone, arts and crafts activities and cultural food and stalls.

The procession leaves Crown Street at 10.30am and will travel along Acton High Street on to East Churchfield Road into Acton Park.



Ealing Beer Festival brought to you by CAMRA

- 12-15 July, Walpole Park (Ealing)
- Wednesday- Friday 12noon-10.30pm
Saturday: 12noon-8pm
- TICKETS: £20 (advance or on the door), including: Souvenir glass, programme and £10 drinks tokens (any credit remaining is refundable). Discount available for CAMRA members.

London's largest outdoor CAMRA beer festival is returning to Ealing for the 32nd year with more than 320 real ales, ciders, perries, craft keg, wines and imported foreign beer.

For more information visit the website, ebf.camra.org.uk



Produced by The Event Umbrella on behalf of Ealing Council, the Comedy, Blues and Jazz festivals are an intrinsic part of the musical and comedic history of the area and bring the great British festival experience to your doorstep with side-splitting comedy, music for dancing and chilling to, cold drinks and amazing street food.

Ealing Comedy is hosted in a single Big Top main stage with seating, while the Blues and Jazz festivals play host to the Big Top main stage and plenty of room for dancing, an open air stage as well as kids craft and activities.

Find out more about the events and buy your tickets at www.ealingsummerfestivals.com

Ealing Comedy Festival in partnership with Headliners Comedy

→ 20-21, 27-28 July, Walpole Park

Doors open 6pm / shows start at 7.45pm

→ TICKETS: From £25

Ealing Comedy Festival is back to bring lots of belly laughter to Walpole Park and remains one of the best stand-up events in west London. It's time to get excited as more comedy greats from the circuit come to perform in Walpole Park.

Some of the top comedian appearing are Omid Djalili, Paul Chowdhry, Stephen K Amos, Nina Conti and Alan Davies – plus some special guests.



Ealing Blues Festival in partnership with Ealing Blues Club

→ 22-23 July, Walpole Park

→ TICKETS: From £10

Founded in 1987, the Ealing Blues Festival has continued to carry the flame for Ealing's blues/rock heritage and is now London's longest running Blues Festival.

It sees itself as a 'celebration of blues, roots and rock' and has always presented a varied line-up. This year will be no exception with 20 acts appearing, including: legendary Ealing Club veterans The Manfreds - featuring original members Paul Jones & Tom McGuinness, Tex Mex exponents Los Pacaminos, 2023 UK Blues Federation 'Emerging Artist Award' winners The Terraplane Blues Band, the world's only 'undead' all female rock band The Vampirettes, old time voodoo vaudeville act Jo Carley and the Old Dry Skulls – plus many more.

New Gen Festival

→ 26 July, Walpole Park

→ TICKETS: £2.50

After a successful debut in Walpole Park last year New Gen, a festival for young people and by young people, is back.

It is run by a partnership of youth organisations working with young people in Ealing including Ealing Council, Bollo Brook Youth Centre, JE Delve, Descendants, WAPPY, University of West London, and Elevate Arts.

The first part of the day is aimed at families and under 16s, and from 5pm onwards for 16+. There will be live music, dance and spoken word, with plenty of opportunities to take part, have a go, and develop your creativity. You can keep up to date by following @newgen_fest on Instagram.

There are also opportunities for young people 16–25 to get involved. Email newgenfest@hotmail.com

Ealing Jazz Festival

→ 29-30 July, Walpole Park

→ TICKETS: From £10

First held in 1984, this festival attracts the best of jazz and world music and is one of London's longest running jazz events. This year the line-up is stellar. This year we are proud to announce ESF's first all-female day of programming on the 29 July with Mica Millar topping the bill and supported by the best female talent from across the world including Cherise and Jasmine Myra.

On Sunday 30 July, two of the UK's most celebrated jazz acts will take to the stage. Jumping off from the sonic springboard of Afrofuturism, grime and future soul, all fused together with the fearless spontaneity of jazz is arts collective Steam Down. Supporting them is Soweto Kinch, one of the brightest stars in both the British Jazz and Hip-Hop scenes.



Paul Wood (C)Jazz Image

Get involved

There are lots of ways to get involved in the Comedy, Blues and Jazz festivals.

Local traders, businesses and charities – get in touch to ask about running stalls. If you want to take your restaurant outdoors, but have never run a pop-up stall, do not worry because the festivals team can help you do just that. Email hello@theeventumbrella.com to have a chat.

You can also get noticed at the events by being one of its sponsors – there are a variety of packages and benefits to choose from. Email hello@theeventumbrella.com



WIN tickets

Around Ealing and Ealing Summer Festivals have teamed-up to give away 12 tickets to readers in a competition.

There are three chances to win, because three lucky entrants will be able to win one of the following prizes:

- Four tickets for Ealing Comedy
- Four tickets for Ealing Blues
- Four tickets for Ealing Jazz

To stand a chance of winning, all you have to do is answer the following question correctly and send your answer in by email to hello@theeventumbrella.com by the deadline of 11.59pm on Friday, 14 July (2023). Question: **What day is Mica Millar playing?**

Make sure the subject line of your email is 'ESF competition'. Once the deadline has passed, three winners will then be randomly drawn out. Only the winners will be notified – and these must respond by email in a stated period of time, or alternative winners may be drawn in their place. Names of winners may appear at www.ealingsummerfestivals.com or on Around Ealing's website aroundealing.com. Employees of Ealing Council are excluded from the competition and may not take part. No monetary alternative is available.

Summer fun for families

The long summer school holidays can eat into any family budget, and with the current cost of living crisis, finances are stretched thinner than ever.

But you can do lots for free, right on your doorstep. As well as the playgrounds and award-winning parks found all over the borough (see www.ealing.gov.uk/parks), there is lots more to get stuck into. Here's a taster.

HOLIDAY CLUB

Activities are being organised for Ealing Council's free Holiday Activity and Food programme (HAF) at locations across the borough. It is available to children and young people in receipt of free school meals, and some limited additional places are given to other vulnerable children and



young people. Activities range from educational trips to dancing, from athletics to arts and crafts, and from cookery to film making. Children are also given a midday meal.

The programme of activities will run from 31 July–1 September and bookings will be taken close to the school holidays at www.ealingfamiliesdirectory.org.uk – so keep an eye on the HAF pages there.

Councillor Kamaljit Nagpal, the council's cabinet member for a fairer start, said: "This is a great programme of fun and activities which includes a healthy meal for every child attending. And all for free. If you have a child who is in receipt of benefits-related free school meals, I urge you to find out more."



A FUN FAMILY DAY OUT

Gunnersbury Park Museum is a special place to explore, play games, dress up and investigate objects together to discover what life was like for families in the past.

It has free family trails available all year round. Pick up a Passport Trail, follow the clues, collect the stamps and you're in with the chance of winning a fluffy toy animal to keep, inspired by the wildlife in Gunnersbury Park, which is jointly owned by Hounslow and Ealing councils. Find out more at www.visitgunnersbury.org

CREATIVE WORKSHOPS

Pitzhanger Manor and Gallery is running free art workshops each Sunday throughout the holidays and drop-in art



workshops during weekdays.

There is also a creative summer holiday camp, with each day led by an artist, which is free to families in receipt of free school meals, universal credit or jobseekers' allowance and reduced to £20 for families with a low income.

Check out full details at www.pitzhanger.org.uk

FREE FUN FOR OLDER CHILDREN

Ealing Youth Service provides a range of services across the borough – including 3 main youth centres, a wide array of projects and neighbourhood activities.

This summer, the council's service is putting on a number of free activities for 11-19 year-olds (or up to 25 if you have additional needs) on Tuesdays and Thursday evenings, 6.30-9pm.

You can get involved in trying your hand at a music studio, cooking, art and craft, sports, box fit, games and competitions or Oculus VR/Play Station/Xbox. You can make new friends or just chill with your mates – this is at both:

- Westside Young People's Centre - Churchfield Road Ealing W13 9NF
- Young Adult Centre (YAC) Park View Road Southall UB1 3HJ.

At Westside on Wednesday evenings (6.30-9pm), there is also an additional Disability Project session for young people with additional needs or a disability, aged 11-25.

Find out more at www.youngealing.co.uk – including details of activities in Acton, Greenford and Northolt



"But your local library is not just about books," said Councillor Polly Knewstub, the council's cabinet member for thriving communities. "Throughout the summer holidays there are lots of free, fun activities with even more to come."

Discover how creative you can be with coding and tech at Ealing Central Library, where you can build a robot and write the code to make its legs and eyes move and respond to your commands. And, if the human

body is your thing, join in with Jones the Bones at Northolt and Southall libraries, using a life size skeleton to find out how organs and muscles work. Rhyme Runners at Acton and Ealing Central libraries is a fun learning experience through poems, song and comedy capers.

For more library free fun activities, keep an eye on the events page www.ealing.gov.uk/libraries

NOT JUST BOOKS

Take part in the Summer Reading Challenge, a fictional summer obstacle course brought to life with illustrations by children's illustrator Loretta Schauer. There are prizes for each book read, and once completed you'll be rewarded with a winner's medal.





Watch Alison's
video online at
[aroundealing.com/
jewellery-start](http://aroundealing.com/jewellery-start)

Alison Crossick in
her home studio

Designing a dream

A free online course could be just what you are looking for if you are looking to start or grow a business.

Are you over 50? Do you have dreams for a business idea but are unsure of how to bring it to life? Or lack the confidence to take the leap? If so, a unique online course that guides you in starting a business could be just the answer.

Startup School for Seniors is an eight-week online course designed to be flexible around your day-to-day commitments and features more than 25 hours of pre-recorded videos along with a weekly group session.

Ealing Council's adult learning team,

Learn Ealing, is a proud partner of this free course that includes:

- Qualified mentors to guide you
- A weekly exploration and collaboration call to help you to articulate your business ideas
- A supportive private Facebook group to help you continue your startup journey and provide you with valuable resources.

You will cover a number of topics ranging from where the best ideas come from, how to find your first customer, how to market your business, and where to find funding.

During the course you will build confidence, improve your networking and social skills and become a business owner.

Suzanne Noble, co-founder of Startup School for Seniors, said: "It's great to be able to support someone to take an idea that they may have had sitting on the shelf for years, and help them bring it to life while regaining their confidence. There's a real buzz in our weekly group sessions where participants are able to share their idea and receive validation from the other members of the group. And there's nothing like that moment when a cohort member makes their first sale."

A NEW WORLD

Ealing resident Alison Crossick decided to turn her jewellery making pastime into a fully-fledged business after seeing the course advertised in the weekly e-newsletter **AroundEalingExtra** last year.

In her previous career Alison was a teacher, before becoming an educational psychologist working in local authorities.

She said: "The Startup for Seniors course opened up a new world for me. The one thing I really took away from it was don't wait until you've got everything in place for your business, just get involved.

"It kickstarted me to be brave. It gave me the confidence to give it a go.

"Everyone on the course were from very different backgrounds and had very different businesses, it was wonderful to meet some fascinating people."

You can often find Alison now selling her beautiful jewellery at the Duckpond Market in Chiswick. She will also be at the Borough of Ealing Arts Trail (BEAT), at the Questors Theatre in



Alison crafting jewellery

September. Follow her on Instagram @alisoncrossickjewellery

Councillor Louise Brett, the council's cabinet member for decent living incomes, said: "Being your own boss is hard work but incredibly rewarding and invigorating. This is a fantastic opportunity for anyone aged 50 and over to help with making their dream business idea into a reality.

"These success stories are

inspirations for what can be achieved, so if you have a business idea and aged 50 or over, what's stopping you? Get in touch and make that idea a business with the support of this programme."

SIGN UP

For more information about the course or to apply for a place visit

www.startupschoolforseniors.com

Retrofit a new career

You will have read a number of stories in Around Ealing over the last couple of years about the retrofitting of homes and other buildings to make them more energy efficient.

It is a fast-growing industry across the country. It can not only help to tackle the climate crisis, but it could also help address fuel poverty and save us all money on energy bills.

And a fast-growing industry needs a fast-growing workforce – and the Retrofit Academy is a recent initiative training up people to learn how to be a part of it.

Part-funded by Department for Business, Energy

and Industrial Strategy and part-funded by the council, there are courses for local people to apply to retrain and qualify as retrofit assessors and courses for up-skilling professionals to become qualified as retrofit co-ordinators.

The retrofit assessors carry out surveys on properties and prepare reports on what measures might be carried out. Meanwhile, the retrofit co-ordinators make sure all of the buying, specification, and installation of the energy efficiency measures is done in compliance with rules and regulations.



Find out more at **retrofitacademy.org/retrofit-training-and-qualifications**

Let's get creative

After the successful launch of the new Acton and Park Royal Creative Enterprise Zone (CEZ) last year, and a call for ideas, funding has now been awarded for the top proposals.

Ten local organisations have been successful in their bid for funding to bring their innovative and inspired ideas to life in the borough's Creative Enterprise Zone.

Interested applicants were invited by Old Oak and Park Royal Development Corporation (OPDC), in partnership with Ealing Council, to submit their concepts that supported the creative industry.

More than £150,000 of funding has now been awarded to support projects that will focus on delivering affordable community and creative spaces, developing creative talent and a digital network platform. The successful projects represent the diversity of Acton and Park Royal, with 82% of the projects being run by minority ethnic, female, LGBTQIA, and disabled led organisations.

The Acton and Park Royal CEZ hopes to unlock new opportunities for homegrown creative industries, artists and businesses



by driving investment towards the borough's talent, as well as providing much-needed funding to get projects off the ground.

The ten successful applicants are:

- Excelsior Studios
- MAMA Youth Project
- Bollo Brook Youth Centre
- A LOOK INTO
- Form and Beyond
- W3 Hive
- ARTification and Pati Starzykowski
- Hikayetna (meaning Our Story) – Hosting Park Royal Nights events giving opportunities for storytelling, poetry, music and inspiration within the community.
- Loom Projects
- Park Royal Design District

A WEALTH OF TALENT


Councillor Louise Brett, Ealing Council's cabinet member for decent living incomes, said: "There is such a wealth of talent in the borough and it's so encouraging to see it



coming to life within our Creative Enterprise Zone. This is a brilliant scheme to be part of, it encourages these businesses to grow, share ideas and develop new talents.

"Congratulations to all the successful applicants and it is fantastic to see such a rich diversity of business leaders driving forward these exciting and invigorating projects."

The CEZ is already home to several artists and studio spaces and the hope is that it will nurture new talent and bring further investment to existing businesses in the area.

Since the programme was started by the Mayor of London in 2018, around £14million has been invested in areas across the capital to support artists and creative businesses find permanent affordable space to work, provide support to new creative businesses and improve access to creative sector skills and employment. 

Seeds of change



A derelict piece of land that was once a thriving allotment site is being brought back to life and being transformed into a space for local people to get involved in growing and sharing fresh food.

Southall Community Alliance (SCA), a registered charity, is leading on this transformative urban garden project in Western Road, along with the help and support of other local groups and organisations. This includes Ealing Council, Southall Transition, Ealing Allotments Partnership, Feeding Ealing and LAGER Can.

The charity has great aspirations for bringing the site, owned by the council, back into the heart of the community. A vast amount of dumped waste and fly-tips have been removed from the site and volunteers, including the council's park rangers, have been working hard to prepare the ground and source materials. But there is still plenty of work to be done.

Janpal Basran, director of SCA, said: "We want to turn this site into a place that will be enjoyed and used by local residents for decades to come. What we need are volunteers to help us do this, to get involved, grow produce and help us to alleviate food poverty."

The vision is to create an environmental hub that will help educate people about improving their environment, learn about food growing and gain the skills to look after a large green space.

Councillor Polly Knewstub, Ealing Council's cabinet member for thriving communities, said: "This piece of land has been out of use for far too long. I am pleased that we, in partnership with the Southall Community Alliance, are taking steps to bring it back into community use. I strongly encourage



Community members of the urban garden ground force team

local residents to come along and volunteer their time, enthusiasm and expertise to help make this a great space for everyone to enjoy."

LEND A HAND

If you would like to get involved there is a regular volunteer drop-in session every Wednesday from 11am-2pm. And if you have a particular skill, such as carpentry or joinery that you could offer the project, your help would be gratefully received. Email Janpal at manager@southallcommunityalliance.com or call him on 07958 499222.



Read the full story at
aroundealing.com/news/urban-garden

Win compost bin



Compost is a natural fertiliser and is full of nutrients to feed your garden and it is also an environmentally friendly way to recycle your food waste and clippings from your garden. To encourage more residents to try home composting, we are giving away 5 compost bins to readers in a competition.

To find out how to enter the competition, go to aroundealing.com/climate/compost-bin-competition

Gardener's best friend

Sign up for the council's garden waste collection service

For more information and prices visit
www.ealing.gov.uk/gardenwaste



The cost of the service can even be shared with a neighbour. Current subscribers will receive a reminder email and can pay online via My Account.



Sally and Sylvia are helping to transform this space in Hanwell

Watch video at
aroundealing.com/news/dig

Community growth

Community gardens are a great place to spend time if you want to find out more about how to grow food, or if you are looking to volunteer.

A community garden is being given a new lease of life and volunteers are being invited to join in and help to make it a welcoming space for everyone to enjoy.

Ealing Council has granted Cultivate London, a horticultural charity and social enterprise that runs projects across west London, the lease for some land in Green Lane, Hanwell. Cultivate London are running their DIG project there, with plans to turn the space into a thriving community resource.

Sylvia Cordell, Cultivate London's business and community development manager, said: "We would really like more people to come along and

grow produce with us. You don't need any particular skills or knowledge, just bring yourselves along and a willingness to pitch in.

"The site has been closed for a while and it is a bit hidden so people might have forgotten it's here. We want to remind them that it is here, and to come and see what we are doing to make it a great community space. We're a friendly bunch."

The charity received funding for the DIG project from a number of sources, including the council's Future Ealing fund, which provides financial support to community-led ideas that help the recovery of business, neighbourhoods and the local area.

Cultivate London has been encouraging


and helping local communities to better connect with their green spaces by sharing horticulture and environmental knowledge since 2010.

GET INVOLVED

If you would like to get involved you can go along to the volunteer drop-in session, which is held every Monday from 10am-3pm. You can spend as much or as little time as you want there, with tasks for all ages and abilities. You can even just go down to enjoy the fresh air, meet the team and have a cuppa.

BRINGING THE COMMUNITY TOGETHER

Councillor Polly Knewstub, Ealing Council's cabinet member for thriving communities, said: "It's wonderful to see this garden beginning to flourish again, and for the community to be coming together and making this space something really special.

"It's a great opportunity to meet other people, give something back to where you live and make it a place that residents can really benefit from." 



Hanwell DIG



Allotment produce

Waste not, want not

Nothing goes to waste on allotments, especially with food prices on the rise.

Growing something from nothing can bring a real sense of achievement and there is great pleasure to be had in sharing with others and reducing food waste.

Paul Carter, chairman of the Ealing Allotments Partnership, said: "There are lots of people who benefit from the borough's allotments. Many plot holders give to one another, as well as friends and family, and we tend to make sure that surplus produce is made available for others including local organisations and places of worship. We don't want to see food go to waste."

FRESH AND NOURISHING

Community-minded tenants at Village Park allotments in South Ealing are just one of the groups regularly making donations from their plots. They give produce to The Store Cupboard, a charity supporting families in need.

One of these Village Park tenants is Goli Mohtadi. She said: "With all the saddening news coming in from the Ukraine last year, I found myself really wanting to take some kind of positive action. I'd been concerned about everyone's access to fresh, nourishing food for a while, so thought why not just grow as much as I can, and share it with organisations who can distribute it?

"Thanks to the solidarity and warm support, and the thoughtful and practical help of Glendra, the allotment's manager on behalf of Ealing Transition, and the steering group, we've collectively been able to grow food to share. I've grown what I could, and grower friends' surplus produce has meant that we could make a weekly contribution to a wonderful organisation in West Ealing, who are doing great work."

Other allotment sites have also set up ways to donate to gurdwaras, churches and local hospices, including at

Bixley Fields in Southall; Ascott in Ealing; and Horsenden in Greenford.

Councillor Deirdre Costigan, Ealing Council's deputy leader and cabinet member for climate action, said: "It's really encouraging to see the community coming together in this way, reducing food waste and helping others. It's one of the things that makes me proud to live in Ealing.

"As well as developing community spirit, allotments have significant environmental benefits. Growing your own, eating locally and seasonally, helps to reduce your carbon footprint and environmental impact.

"As a council, we are committed to supporting Ealing residents who want to grow their own fruit and veg, and we plan to deliver 10 new community growing spaces in our housing estates and on new developments in the next couple of years."

START GROWING

There are more than 50 allotment sites in the borough, and a total of nearly 3,000 plot holders. If you aren't fortunate enough to have a plot already, but you would like to, you will probably have to join a waiting list. Having a plot requires time and commitment, but if the seed has been planted and you do want to get your hands dirty while you wait, there are mini-plots that are a bit easier to come by.

But you don't need to have an allotment or a garden to harvest fruit or veg, there are many easy to grow items that can be nurtured from your windowsill at home – or in a community garden (see pg 28).

Read more at aroundealing.com/news/growing-allotments 




Bixley Fields allotments

Setting down roots



Councillor Costigan with pupils in Hobbayne Primary's tiny forest

 n 17 June, the borough's second annual Tree Festival was due to be held, in partnership with the environmental charity Trees for Cities.

It marks a year since Ealing Council's biodiversity action plan was put in place. A critical part of that plan, and the council's wider climate action strategy, is tree planting. It aims to plant 50,000 new trees by 2026.


Trees are incredible – they have the power to absorb air pollution, support wildlife, cool pavements during heatwaves and help prevent flooding.

This spring, Hobbayne Primary School in Hanwell also marked an anniversary – a year since its pupils helped plant a 'tiny forest' of 600 trees on the school grounds in collaboration with Earthwatch. It has fast-growing, native species and aims to help mitigate the impacts of climate change, create a rich habitat for urban wildlife and help reconnect children to the natural world.

Over five months, from November to March, the council planted 7,000 trees across the borough. And it will plant a further 13,500 trees by March 2024. Its park rangers have also been working with volunteers from Friends of Horsenden Hill on a tree nursery to nurture saplings for the council to use for future planting.

Ealing was recognised last year with Tree City of the World status. The international accolade is reserved for the most successful approaches to managing urban trees and woodland.



Read more on the Tree Festival at aroundealing.com/news/ealing-tree-festival-returns 

A helping hand

If you struggle with form filling, need advice on council matters or could do with some help setting up your online council account, Ealing Council has a solution.

Thousands of residents have already felt the benefits of the council's community hubs, which were set up last year in four of the borough's libraries. They are in Acton, Northolt, Southall and Ealing.

The hubs are a quick and convenient way to access in-person help and support and, if the trained advisor is unable to give you the answer there and then, they will arrange for someone else to give you a call.

Community hub team manager, Imran Iqbal, said: "Staff are on-hand to give residents the right tools, support and confidence to enable them to self-serve. A significant number of people who visit the hubs face language barriers, don't own a smart phone or have internet access or are not able to make online payments."

IT'S A LIFELINE

Karen Ramsammy, who works across the four hubs, added: "It's a lifeline



Watch video on
how to get help
[aroundealing.com/
news/hub-help](https://www.ealing.gov.uk/costofliving/news/hub-help)

for a lot of people. Some people, particularly those who are more vulnerable, need that face-to-face communication and support. We can also help residents gain access to courses that would benefit them, such as ESOL (English for speakers of other languages) courses."

On average, more than 1,000 residents visit the hubs every month. The main reason for visiting tends to be for council tax advice and housing benefit enquiries, but there has been a spike in energy rebate queries and access to supermarket vouchers because of the current cost of living crisis.

Councillor Steve Donnelly, cabinet member for inclusive economy,

said: "We understand that for some residents, speaking to a member of council staff in person is more suitable than going online or phoning. So, we are making sure that a face-to-face service run by experienced and professional staff is always available for those who want to use it, in our libraries. We want our services to be easy to access for everyone."

The council's website www.ealing.gov.uk/costofliving has useful information and advice around how to access support for the cost of living. Whether at home, or at one of the community hubs, you can see more there.





Left: Ziya Fahimi being helped by hub worker Rosa Eugenio Cáceres

Below: Hub worker Karen Ramsammy receives flowers from a grateful customer



FREE DATA

If you are over 18 and struggling to afford data to use your mobile devices, visit one of the community hubs where free data from O2, Vodafone and 3 Mobile is now available for up to six months, thanks to the Good Things Foundation. See more at www.ealing.gov.uk/costofliving

WHERE ARE THE HUBS?

Visit the community hub closest to your home:

- Acton Library, Everyone Active, Acton Centre, W3 6NE
- Ealing Central Library, Ealing Broadway Shopping centre, W5 5JY
- Northolt Library, Church Road, UB5 5AS
- Southall Library, The Dominion Centre, UB2 4BQ.

Southall and Ealing community hubs are open Monday–Friday, 10am–5pm (closed 1–2pm for lunch). Northolt is only open as a hub on Tuesdays and Thursdays and Acton is open on Mondays and Wednesdays. 



Hub workers

“I
- actually -
UNPACKED



MY BAG”

Novia, aged 13

Do you remember what it was like to be a teenager? Now imagine your family was having difficulties and all you wanted was somewhere safe and stable to stay. Fostering a teenager can be challenging, but it's a hard time for them too. We need you to understand the needs of our young people and be there for them through the highs and lows, to support them on their journey. As a foster carer we will provide you with excellent support and training. We also pay teenage fostering allowances of between £337 to £470 per week for each young person you look after, depending on their age and your experience.

Together we can do this at ealingfosteradopt.co.uk Freephone: **0800 731 6550**
Email: fosteradopt@ealing.gov.uk Facebook: [/ealingfosteradopt](https://www.facebook.com/ealingfosteradopt)

'My protector'

Kind-hearted carers are being encouraged to come forward and find out more about being part of Ealing Shared Lives adult placement scheme.

Do you have space in your heart and room in your home? Because that's all it takes to be part of Ealing Council's Shared Lives scheme, according to one carer who opened her heart and home to a special young woman more than 20 years ago.

Shared Lives Week and Learning Disabilities Week are both being nationally celebrated this month (June) and to mark this, Around Ealing spoke to carer Patricia and Norvege, who was welcomed into Patricia's family from the age of 15, about their experience of being a part of Shared Lives.

Ealing Shared Lives (ESL) is an adult placement service, which enables carers to provide support and accommodation to adults with additional needs who live in Ealing. This can be either on a long-term basis or for short breaks.

Patricia welcomed Norvege, who has learning disabilities, into her family as a foster care placement when Norvege was a teenager.

Norvege soon became a firm part of the family and, thanks to the Shared Lives scheme, she was able to remain with Patricia, her husband and their son in their home in Greenford after she turned 18. Norvege is now 36 years old.

'WE ALL NEED SOMEBODY'

Patricia said: "It's not a job, it's about what you have in your heart to offer.

"We all need somebody, and the little you can help in this world – it's important, and Shared Lives is there."

Norvege added: "When I'm with [Patricia] I feel like she's my protector, my shield, and there's no one like her. There's nothing I love more than being with my family."

Norvege also enjoys going to IMPACT Theatre, in Perivale, and taking part in the various disability arts, events and activities that they offer.

Councillor Josh Blacker, Ealing Council's cabinet

Read more at
[aroundealing.com/
news/hearts-shared](http://aroundealing.com/news/hearts-shared)

member for healthy lives, said: "It's so heartwarming to see wonderful relationships like Patricia and Norvege's develop. It's such a rewarding and fulfilling scheme to be part of and our hard-working staff strive to place people with the right families for them."

FIND OUT MORE

Contact Verity Fitzgerald, via email: fitzgeraldv@ealing.gov.uk or visit www.ealing.gov.uk/sharedlives

Shared Lives Week 26–30 June

To celebrate Shared Lives Week and 30 years of Ealing Shared Lives, the ESL team is hosting a tea party in Ealing Town Hall 11am-1pm on Monday, 26 June. Go along to find out more about ESL.



Interested in becoming a carer?



Join us!

Monday, 26 June

11am-1pm

At The Telfer Room, Ealing Town Hall

RSVP: fitzgeraldv@ealing.gov.uk

Tel: 07958 037 514

Come and celebrate 30 years of Ealing Shared Lives & find out more about what it means to be a carer. ESL supports adults with additional needs and is recruiting for more carers.

www.ealing.gov.uk/sharedlives



GUNNERSBURY PARK SPORTS HUB

We have something to keep the whole family active and entertained including:

- State-of-the-art gym
- Sports hall
- Fitness studios
- Floodlit 3G pitches
- Floodlit tennis courts
- Football, cricket and rugby pitches

Discover more at
better.org.uk/gunnersbury-park



BETTER

Tackling violence

PLEASE
STOP



Every day, women and girls experience incidents of abuse, harassment, or violence at school, work, on public transport, in public spaces and at home. Yet many do not know where to go to for help or do not have the confidence to report it.

Last year, Ealing Council asked local women and girls to talk about their own experiences across our seven towns, and the findings highlighted significant underreporting of offences, driven by a lack of understanding or confidence to make a report, and lack of awareness about support available.

EASIER TO FIND HELP

To address this, this summer the council is setting up a website www.saferealing.co.uk to raise awareness and provide up-to-date information on activities and services in the borough. By providing clear, easily accessible, and regularly updated local information, the website aims to improve understanding and increase confidence in reporting.

IMPROVING PUBLIC SPACES

Councillor Jasbir Anand, the council's cabinet member for tackling inequality

and crime, said: "The council is committed to tackling male violence against women and girls and we've already made improvements to our public spaces, increased street lighting, invested in domestic abuse services and introduced a customised education programme in secondary schools across the borough.

"The new, dedicated website can easily and quickly be accessed through QR codes at key locations where we've increased CCTV coverage. This website will support an ongoing dialogue with communities by linking to the websites of specialist local services and will feedback knowledge needed by the council and Ealing's communities to build resilient support networks."

CCTV CAMERAS

CCTV coverage has been improved at 25 locations across the borough with the installation of 10 upgraded cameras and 15 new ones that women

identified as places where they feel less safe. A further 8 cameras will be installed by summer. [Be](#)

90% of respondents did not know of organisations supporting women experiencing violent or abusive behaviour

14% of women and girls who had experienced unwanted behaviour or comments had reported it.

Domestic abuse



A local GP explains how to help victims aroundealing.com/news/ending-abuse

CENTRAL GREENFORD



Shahbaz Ahmed
Labour
0754 080 1722
AhmedShah@ealing.gov.uk



Aysha Raza
Labour
0772 031 2035
Aysha.Raza@ealing.gov.uk



Sanjai Kohli
Labour
0790 409 5990
KohliS@ealing.gov.uk

DORMERS WELLS



Kanwal Kaur Bains
Labour
0793 015 8585
BainsKa@ealing.gov.uk



Ranjit Dheer
Labour
0789 422 8032
Ranjit.Dheer@ealing.gov.uk



Mohinder Kaur Midha
Labour
0795 084 2599
MidhaM@ealing.gov.uk

EALING BROADWAY



Julian Gallant
Conservative 0780 222 1393
GallantJu@ealing.gov.uk
Leader of second opposition



Mrs Seema Kumar
Conservative
0796 131 7110
Seema.Kumar@ealing.gov.uk



Anthony Young
Conservative
0791 700 7969
Anthony.Young@ealing.gov.uk

EALING COMMON



Praveen Anand
Labour
0203 612 3587
AnandP@ealing.gov.uk



Jon Ball
Liberal Democrat
0208 810 1078
Jon.Ball@ealing.gov.uk



Connie Hersch
Liberal Democrat
020 8825 7188
HerschC@ealing.gov.uk

EAST ACTON



Kate Crawford
Labour
0208 992 9353 (evenings)
Katherine.Crawford@ealing.gov.uk



Stephen Donnelly
Labour 0771 409 3099
DonnellyS@ealing.gov.uk
Cabinet: Inclusive economy



Hitesh Tailor
Labour 0799 063 7183
Hitesh.Tailor@ealing.gov.uk
Mayor of Ealing

GREENFORD BROADWAY



Varlene Alexander
Labour
0748 433 5273
AlexanderV@ealing.gov.uk



Harbhajan Kaur-Dheer
Labour
0782 515 7044
Harbhajan.Dheer@ealing.gov.uk



Anthony Kelly
Labour
0777 174 0912
Anthony.Kelly@ealing.gov.uk

HANGER HILL



Fabio Conti
Conservative
0781 717 4279
ContiFa@ealing.gov.uk



Gregory Stafford
Conservative
0797 311 9625
Gregory.Stafford@ealing.gov.uk



Athena Zissimos
Liberal Democrat
0208 825 6690
ZissimosA@ealing.gov.uk

HANWELL BROADWAY



Yoel Gordon
Labour
0796 078 3825
Yoel.Gordon@ealing.gov.uk



Monica Hamidi
Labour
0737 797 2559
HamidiM@ealing.gov.uk



Polly Knewstubb
Labour 0755 521 1569
KnewstubbP@ealing.gov.uk
Cabinet: Thriving communities

LADY MARGARET



Karam Mohan
Labour
0794 752 2084
Karam.Mohan@ealing.gov.uk



Swaran Padda
Labour
0795 080 6210
Swaran.Padda@ealing.gov.uk



Kamaldeep Sahota
Labour
0741 280 8803
SahotaK@ealing.gov.uk

NORTH ACTON



Daniel Crawford
Labour
0208 992 9353
Daniel.Crawford@ealing.gov.uk



Hodan Haili
Labour
0757 734 1614
HailiHo@ealing.gov.uk



Blerina Hashani
Labour
0208 825 6833
HashaniB@ealing.gov.uk

NORTH GREENFORD



Muhammad Iqbal
Labour
0759 594 5843
IqbalMu@ealing.gov.uk



Amarjit Jammu
Labour
0796 075 4646
Amarjit.Jammu@ealing.gov.uk



Shital Manro
Labour 0795 837 6745
ManroS@ealing.gov.uk
Cabinet: Good growth & new housing

NORTH HANWELL



Louise Brett
Labour 0781 691 6808
BrettL@ealing.gov.uk
Cabinet: Decent living incomes



Claire Tighe
Labour
0785 169 6138
TigheC@ealing.gov.uk



Ray Wall
Labour
0738 344 1885
Ray.Wall@ealing.gov.uk

NORTHFIELD	 Paul Driscoll Labour 0784 932 8223 DriscollP@ealing.gov.uk	 Ian Kingston Labour 0797 038 5225 KingstonI@ealing.gov.uk	 Kim Nagpal Labour NagpalK@ealing.gov.uk
NORTHOLT MANDEVILLE	 Deirdre Costigan Labour 0793 032 2315 CostiganD@ealing.gov.uk Deputy leader & Cabinet: Climate action	 Miriam Rice Labour 0741 559 2153 Ricem@ealing.gov.uk	 Chris Summers Labour 0751 987 2341 chris.summers@ealing.gov.uk
NORTHOLT WEST END	 Bassam Mahfouz Labour 0794 910 4656 Bassam.Mahfouz@ealing.gov.uk Cabinet: Safe & genuinely affordable homes	 Dee Martin Labour 0778 887 2191 Dee.Martin@ealing.gov.uk	 Lauren Wall Labour 0752 545 2812 Lauren.Wall@ealing.gov.uk
NORWOOD GREEN	 John Martin Labour 0793 095 6902 MartinJ@ealing.gov.uk	 Ghulam Murtaza Labour 0790 350 2566 MurtazaG@ealing.gov.uk	 Tarept Sidhu Labour 0744 800 2067 SidhuT@ealing.gov.uk
PERIVALE	 Munir Ahmed Labour 0758 242 8643 Munir.Ahmed@ealing.gov.uk	 Tariq Mahmood Labour 0795 731 3079 Tariq.Mahmood@ealing.gov.uk	 Charan Sharma Labour 0775 764 5967 Charan.Sharma@ealing.gov.uk Deputy Mayor of Ealing
PITSHANGER	 Rima Baaklini Labour 0781 621 1810 BaakliniR@ealing.gov.uk	 Ilayda Nijhar Labour 0744 448 9453 NijharI@ealing.gov.uk	 Ben Wesson Labour 0750 242 8483 WessonB@ealing.gov.uk
SOUTH ACTON	 Callum Anderson Labour 0781 612 4603 AndersonC@ealing.gov.uk	 Josh Blacker Labour 0793 477 3372 BlackerJ@ealing.gov.uk Cabinet: Healthy lives	 Yvonne Johnson Labour 0208 993 4166 JohnsoY1@ealing.gov.uk
SOUTHALL BROADWAY	 Sarfraz Khan Labour 0740 466 5858 KhanSar@ealing.gov.uk	 Kamaljit Kaur Nagpal Labour 0744 848 5200 NagpalKK@ealing.gov.uk Cabinet: A fairer start	
SOUTHALL GREEN	 Jasbir Anand Labour 0794 920 2851 AnandJ@ealing.gov.uk Cabinet: Tackling inequality & crime	 Kamaljit Dhindsa Labour 0796 150 5808 Kamaljit.Dhindsa@ealing.gov.uk	 Peter Mason Labour 020 8825 6833 Peter.Mason@ealing.gov.uk Leader of Ealing Council
SOUTHALL WEST	 Surinder Jassal Labour 0208 825 6378 JassalS@ealing.gov.uk	 Faduma Mohamed Labour 0750 611 0026 MohamedF@ealing.gov.uk	
SOUTHFIELD	 Gary Busuttill Liberal Democrat 0798 544 3860 BusuttillG@ealing.gov.uk	 Gary Malcolm Liberal Democrat 0781 320 5218 Gary.Malcolm@ealing.gov.uk Leader of the opposition	 Andrew Steed Liberal Democrat 0773 664 9664 Andrew.Steed@ealing.gov.uk
WALPOLE	 Grace Quansah Labour 0736 181 2763 QuansahG@ealing.gov.uk	 Binda Rai Labour 0752 238 8741 Binda.Rai@ealing.gov.uk	 Gareth Shaw Labour 0778 991 4379 Gareth.Shaw@ealing.gov.uk



parksports
NATURE'S PLAYGROUND

**KIDS
SUMMER
CAMPS**

Camps for Ages 4-16 | Tennis | Football | Netball

Book now at parksports.co.uk

SAVE 10% with code **'AE10'** on our Lammas Park and Chiswick Camps

