

around ealing

Autumn 2022

aroundealing.com | [f/EalingLondon](https://www.facebook.com/EalingLondon) | [@EalingCouncil](https://twitter.com/EalingCouncil)

Cinema and more:

Ealing's new cultural hub **p20**

Change for Southall:

Four-year project begins **p22**

'Electric wallpaper':

The future of heating? **p32**

Local champion

Chloe to get Freedom of
the Borough **p9**

Four-year
vision for
future
p4



Ealing

www.ealing.gov.uk

ACTON EALING GREENFORD HANWELL NORTHOLT PERIVALE SOUTHALL



“The quality of pupils’ academic and other achievements is excellent”

Source: ISI Inspection 2021



Book An Open Day

20th September

(Nursery to Year 6 entry)

24th September

(Year 7 and above entry)

www.sapriory.com

Our Girls Will Change the World



St Augustine's
PRIORY

St Augustine's Priory, Hillcrest Road,
Ealing, London W5 2JL

Catholic Independent Day School for girls aged
3-18 and boys in the Nursery. Set in 13 stunning
acres including excellent sports facilities and
working farm.



AUTUMN22 EDITORIAL



CONTENTS

- 4 LEADER'S NOTES:**
Council leader Peter Mason
- 5 COUNCIL PLAN:**
Four-year vision
- 9 UP FRONT:**
Chloe Kelly, Citizens' Tribunal and more
- 10 HIGH SCHOOL:**
Time to apply
- 11 SCHOOL STANDARDS:**
Top of the class
- 15 HEALTHY START:**
Forming good habits
- 17 GOING GREEN:**
Boosting biodiversity
- 18 NEW ECONOMY:**
Jobs and more
- 20 EALING PROJECT:**
New cultural hub
- 22 SOUTHALL RESET:**
Changes for the town
- 24 4,000 HOMES:**
New housing target
- 27 SHARED LIVES:**
Could you share yours?
- 28 RACE TIME:**
Ealing Half Marathon
- 31 SAVING ENERGY:**
Scheme cutting bills
- 32 'ELECTRIC WALLPAPER':**
Cutting edge heating tech
- 35 VOLUNTEERING:**
It works both ways
- 36 BALANCED APPROACH:**
Preventing falls
- 37 NEW MAYOR:**
Meet Mohinder Midha
- 38 COUNCILLORS**

say this every year, but I can never quite believe it when the summer holidays come to a close and the start of a new academic year rolls around. As the kids begin their new school term, it is also time for many families to plan for the future – with high school places in mind. We've got you covered. Turn to page 10 for some guidance, and we have a full list of local high school open days/evenings on aroundealing.com too.

Our schools have been performing so well (see page 11) and it is a real source of pride.

Talking of pride, the front cover hopefully shows how proud we are of Chloe Kelly and her team winning the Euros. What a moment – and what a legacy to build on.

Following the building theme, you can read about plans for 4,000 new homes (p24-25). And there is a lot more you can read about in this magazine, too – from innovative technology to new cinemas.

Richard Nadal
EDITOR

aroundealing.com
[@EalingCouncil](https://twitter.com/EalingCouncil)
facebook.com/EalingLondon

PUBLISHER
Ealing Council, Communications, Perceval House,
14-16 Uxbridge Road, Ealing W5 2HL, Tel: 020 8825 5000

EDITOR
Richard Nadal, nadalr@ealing.gov.uk

ADVERTISING
advertising@ealing.gov.uk
Distribution: 138,000 copies.

Ealing Council does not accept responsibility for goods or services offered by advertisers. Opinion expressed in this magazine is not necessarily that of the council.

 Please use your blue recycling bin when you dispose of this and other magazines. **Printed on recycled paper**



FRONT COVER: England footballer Chloe Kelly after the Euros final victory. Photo by Nigel French, copyright of PA Images.

Leader's Notes

'Ealing is changing. We have a plan and we are clear where we need to get to'

Councillor Peter Mason
Leader of the council



We recently published a new **council plan**, which sets out our vision for the next four years, as well as explaining our goals for the immediate year ahead. Across the coming pages, you can see some of the council's commitments.

Each summer we will publish an annual update, setting out our progress and the priorities for the next year. We will demonstrate through words and deeds the work we have been able to deliver and be accountable for the impact we have made.

Our borough is amazing, but we know it can change for the better, too. Our priorities are good, well-paid jobs; real climate action; and relentlessly tackling the inequalities that hold people back from achieving their aspirations.

We want to secure a new economy for, and a new relationship with, the people of the borough, to unlock the potential and the creativity of our communities and our towns. We want to collaborate with people and to enable communities to do more: To push power into the hands of people who seldom have it and, when they ask us to do so, get out of the way of communities organised for change when they can do it better.

First, we will require the council to change, too. To become more open,

transparent and inclusive – being very clear and honest about the challenges we face.

As part of our commitment to this process, we will be working on a community charter, which will set out your rights as residents and what you can expect from the council.

But the change the borough needs cannot be achieved by the council alone and will require help from our voluntary, public and private sector partners – and also from you.

During the COVID-19 lockdowns we saw a truly collective spirit. The coming together of neighbours and perfect strangers was repeated again during the street celebrations for the Queen's platinum jubilee.

We want this incredible sense of community to last and to be encouraged, and our plans for new town forums will provide just one important way that this spirit can be harnessed further. These forums will have the power to set the spending priorities for local communities, to give residents more of a voice on what they want.

Ealing is changing. As a place and as a council. We have a plan and we are clear where we need to get to. What can you do to help us?

It was uplifting to discover, not long before the new school term began, that more than nine in 10 of our **schools** have had Ofsted ratings of 'good' or 'outstanding' – the top two classifications. It is quite an achievement, against the backdrop of the pandemic, and deserves enormous respect. A fairer start for our children is a cornerstone of our vision for the borough – and good schools, local to all pupils, is critical to that. See page 11.

When **Chloe Kelly** scored what proved to be a dramatic winner in the final of the European Championship at Wembley a few weeks ago, it was more than a goal. It was a moment of history. And it was made by one of us, which made it even sweeter. Chloe grew up in Southall and went to school in Hanwell. Like many of you, my sense of pride at what her team achieved felt even keener knowing she was such a key part of it. Like we did with Bukayo Saka (from Greenford) last year after the men's team performed so admirably and lifted hearts, we were delighted to offer Chloe the honour of Freedom of the Borough. She, and the rest of her team, are truly inspirational.



Four-year vision

Over the summer, the council set out how it intends to tackle the pressing issues facing the borough over the next four years and help to build an even better place for everyone to live.

Across these three pages are some of the highlights of the Council Plan 2022-2026, which sets out its priorities, its promises to you and some of the action it intends to take to deliver them.

It is all informed by the administration's 2022 election manifesto and the council's three primary strategic objectives, which continue to be: Fighting inequality, tackling the climate crisis, and creating good jobs.

Watch a video at

aroundealing.com/news/council-plan

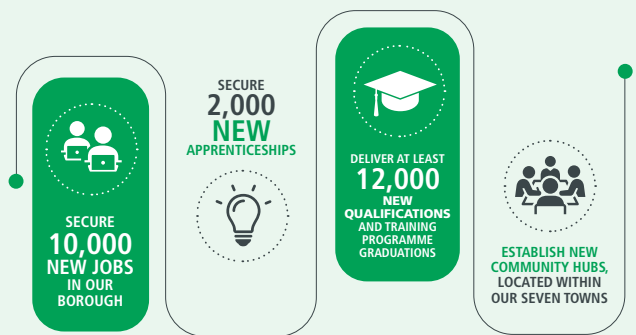
View a summary of the council plan at

www.ealing.gov.uk/councilplan



Decent living incomes

Bringing new and well-paid jobs back to Ealing and ensuring good businesses can thrive.



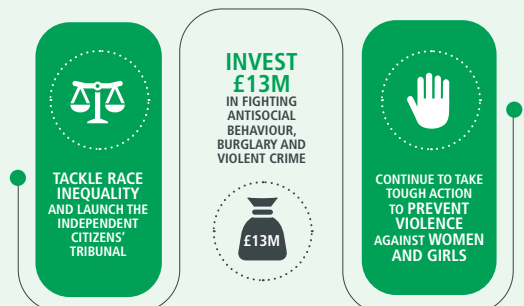
Climate action

Greening and keeping Ealing clean, achieving net zero carbon, and ensuring our parks, open spaces and nature are protected and enhanced.




Tackling inequality and crime

Relentlessly focusing on reducing poverty and inequality for those that most need support and promoting wellbeing and safety for all.



A fairer start

Ensuring all our children and young people get the best start in life, from their earliest years through to a great education.



DELIVER A NEW STATE OF THE ART YOUTH CENTRE IN SOUTHALL

ENSURE EVERY CHILD CAN ACCESS **GOOD AND SUSTAINABLE SCHOOLS** IN THEIR LOCAL COMMUNITY




INVEST £1.5M TO STOP CHILDREN AND YOUNG PEOPLE FALLING INTO CARE

Healthy lives

Protecting and enhancing the physical and mental health of all, supporting our older residents to enable them to remain independent and resilient and dealing with the ongoing impact of COVID-19.



ENSURE EVERY CARE WORKER IN EALING IS PAID **THE LONDON LIVING WAGE**

DELIVER 300 NEW STATE OF THE ART SUPPORTED ACCOMMODATION HOMES





SUPPORT 3,000 OF THE MOST VULNERABLE RESIDENTS TO GET THE CARE IN THEIR OWN HOMES



TACKLE HEALTH INEQUALITIES HIGHLIGHTED BY COVID-19, INVESTING £100M IN THE NEXT FOUR YEARS

Inclusive economy

Building wealth within the community by ensuring everything the council does increases social value and contributes to making Ealing a fairer place to live and work.



OPEN, TRANSPARENT, AND INCLUSIVE COUNCIL EXPAND SERVICES AVAILABLE INSTANTLY AND 24/7

PAY FAIR SALARIES TO ALL OUR STAFF





END PAY GAPS THAT DISPROPORTIONATELY IMPACT WOMEN AND BLACK, ASIAN AND MINORITY ETHNIC COMMUNITIES



EXPAND OUR COUNCIL TAX SUPPORT SCHEME TO PROTECT THOSE WHO CANNOT AFFORD TO PAY

Genuinely affordable homes

Delivering our radical programme of social rent council house building, affordable homes and ensuring our tenants are empowered and have ownership of their communities.



WE WILL WORK TO END THE NEED FOR FAMILIES WHO FACE EVICTION TO STAY IN TEMPORARY ACCOMMODATION

INVEST £20M
IN 100 NEW SAFE AND SECURE PLACES FOR PEOPLE TO STAY




INVEST £509M
IN THE COUNCIL'S HOUSING



DELIVER 4,000 NEW GENUINELY AFFORDABLE HOMES ACROSS THE BOROUGH



SET OUT A NEW COMMUNITY - LED REGENERATION CHARTER

WORK EVEN HARDER TO ATTRACT NEW BUSINESSES





PUT GOOD DESIGN AND HERITAGE AT THE HEART OF HOW WE ENHANCE OUR BOROUGH

Good growth

Making sure the growth that takes place in Ealing enhances its character, conserves its future and makes a great place, where people want to live.

Thriving Communities

Bringing people together to build strong neighbourhoods, empowering volunteers, encouraging community activism, engaging civic and faith leaders, and delivering well-loved community facilities and services.



LAUNCH A COMMUNITY CHARTER: YOUR RIGHTS AND WHAT YOU CAN EXPECT FROM THE COUNCIL

SECURE AND INVEST AT LEAST £1M
IN COMMUNITY AND GRASSROOTS ART, MUSIC, DANCE AND CULTURE




NEW TOWN FORUMS WITH MORE POWER TO SET THE SPENDING PRIORITIES FOR LOCAL COMMUNITIES



BRENTSIDE HIGH SCHOOL

LEARNING AND ACHIEVING TOGETHER



School Open Evening

Tuesday, 27 September 2022 17:30-20:30

Headteacher's talks: 17:45, 18:30, 19:15

Tickets are available at [Eventbrite.co.uk](https://www.eventbrite.co.uk)

Greenford Avenue, London, W7 1JJ 020 8575 9162 www.brentsidehigh.ealing.sch.uk

**WHERE TEACHING
"CAPTIVATES AND INSPIRES PUPILS"
(OFSTED 2020)**

**Year on year, Brentside students achieve
significantly above students nationally**



**Join our highly successful Brentside Sixth Form
A level results in the top 2% nationally**

in two of the three years before Covid

Find out more at our Sixth Form Open Evening in November

Game changer Chloe



Ealing Council is nominating England star and Women's European Championship 2022 winner Chloe Kelly for Freedom of the Borough, following her fantastic performances in the tournament and winning goal in the final.

Chloe, who grew up in the borough and attended Elthorne Park High School in Hanwell, struck the winning goal in extra time in the final against eight-time

champions Germany, sparking elation across the country.

The 2-1 victory was watched by a record crowd of 87,192 at Wembley and more than 17million watched on TV, and made history as the first win for England at a major women's tournament. It was also the first time any England team had lifted a major trophy at senior level since 1966.

Chloe's record-breaking winning goal and impressive performances on the international stage are something that everyone across the borough can be proud of and her nomination for Freedom of the Borough serves to highlight her achievements.

Read more at [aroundealing.com/news/chloe-kelly](https://www.aroundealing.com/news/chloe-kelly)

Earlier this year, fellow England star Bukayo Saka accepted the same accolade – see more at [aroundealing.com/news/honouring-contributions-to-the-borough](https://www.aroundealing.com/news/honouring-contributions-to-the-borough)

1,000 free bikes

A thousand bikes are being given to Southall residents without one, in order to help them get active.

It is being done as part of the Let's Go Southall project, which is funded by the council and Sport England; and with the help of Let's Ride Southall, a group of locals working together to improve their cycling with regular rides and bike maintenance.

Council leader Peter Mason said: "This offer is the first of its kind in the whole of London and I am proud that Ealing is leading the way when it comes to active travel in the capital."

Councillor Deirdre Costigan, cabinet member for climate action, added: "Active travel is so important to us, whether that is to support active and healthy lifestyles, help fight the climate crisis or to improve air quality."



Read more at [aroundealing.com/news/free-bikes](https://www.aroundealing.com/news/free-bikes)

1 A draft **Travel in Ealing Charter** was due to go before the council's cabinet in September, setting out how Ealing Council proposes to work with residents in future, to improve local transport projects. The charter has been created following collaboration with hundreds of people from across the borough and aims to give you a say on shaping future projects – and enable you to tell the council what is not working, what you want to see change and help the council to fix those things. Visit www.ealing.gov.uk/travelinealingcharter

2 The council's annual **scrutiny panels** are keen to hear your views on four topics that have been chosen for the year ahead. This year, the four panels will be looking at support for residents (Tackling the Cost of Living Crisis), the local economy (Recovery from the Pandemic), climate action (Regrow, Rewild and Recycle) and on housing (Genuinely Affordable Homes). Read more and find out how you can get involved in the panels' work at [aroundealing.com/news/scrutiny-2022](https://www.aroundealing.com/news/scrutiny-2022)

3 **Northolt High School** is to have a new school building. The much-needed rebuild of the main building will include new resources for students with special educational needs. It is being funded by the school, the council and money recently awarded by the Department for Education.

4 Keep Britain Tidy has awarded the borough a record 24 **Green Flags** for its parks and open spaces. Read more at [aroundealing.com/news/record-24-green-flags](https://www.aroundealing.com/news/record-24-green-flags)

speedread

For a full list of high school open evenings and mornings, visit [aroundealing.com/news/high-schools-2022](https://www.ealing.gov.uk/news/high-schools-2022)



Apply for high school

Applications for children to start high school in our borough are now being received.

If your child was born between 1 September 2011 and 31 August 2012, he or she will be due to leave their primary school next summer and start year seven at a high school in September 2023.

The recommended date for receipt of applications is 21 October 2022 or, by the absolute latest, the final, statutory deadline is 31 October 2022.

Councillor Kamaljit Nagpal, Ealing Council's cabinet member for a fairer start, said: "Choosing which school your child will attend is a big decision and the applications process can sometimes feel daunting. The council's admissions team do all they can to make the application process as easy as possible, however, we recognise it is an important decision, so if you require support please visit the council's website, contact the schools you are interested in, or speak to your child's current school."

SCHOOLS INFORMATION

To find out more about your preferred schools, you can visit the admissions pages on the council's website at www.ealing.gov.uk/admissions or, alternatively, you can contact the schools themselves. Each school will also be holding an open morning or evening, which you can find on [aroundealing.com](https://www.aroundealing.com) (see box above).

HOW TO APPLY

You can apply online at www.eadmissions.org.uk between 1 September and 31 October 2022. If you are unable to apply online, you can ask your current school for an application form to fill in and ask it for instructions if anything is not clear. If you choose to apply online, you must not complete a paper application as well.

The Cardinal Wiseman (Catholic) and Twyford (Church of England) high schools require a supplementary information

form to be completed to assess denominational commitment and these may be obtained either from the schools themselves, or from the council website at www.ealing.gov.uk/admissions

NEW SCHOOLS

All new schools proposed to open in 2023 will be outside the co-ordinated application process. Parents wishing to apply to those schools will need to contact the school direct and apply on the school's application form. Parents are strongly advised to also apply for established secondary schools through the co-ordinated system because there is no guarantee at this point that the new schools will open in 2023. ^{ae}

ANY QUESTIONS?

Visit www.ealing.gov.uk/admissions or you can get in touch with your preferred school.

Top of the class

More than nine in every 10 of our borough's schools are now rated as 'Good' or 'Outstanding' by Ofsted.

Ofsted inspections resumed last summer after being interrupted by the pandemic, with eight of our schools being visited. The latest figures now show almost 97% of council-run schools are being given one of the top rankings – and still an impressive 94% when the other schools are included. Pupils at our primary and secondary schools are also getting scores above the national average.

At GCSE level, the 2021 results were the best ever achieved in Ealing despite the disruptions caused to education by COVID-19. And, those of our pupils leaving secondary school are more likely to go on to further education than the national average.

The impressive statistics continue in primary schools, with high averages scored in reading, writing and maths.



Councillor Nagpal at Wolf Fields Primary

'INCREDIBLY PROUD'

"I am incredibly proud of the hard work our schools have achieved to get their impressive Ofsted ratings," said Councillor Kamaljit Nagpal, Ealing Council's cabinet member for a fairer start. "It was a key pledge of the council to improve standards because we believe every child deserves a fair start in life. Now, we will work on maintaining and building on this success."

Councillor Nagpal recently visited some of the schools that were inspected this year – including Wolf Fields Primary in Southall, to celebrate the school's impressive Ofsted rating that saw the school move from 'Requires Improvement' to 'Good'.


A focus on essential skills was a key part of this turnaround, but headteacher Simone Neil said there was also a transformation of the culture. She said: "An essential aspect of the overall success is the high level of personal care centred around children and their families. The children understand that Wolf Fields is their school, that their voice is important, and that staff are there to help them achieve their very best."



Councillor Nagpal at Oldfield Primary

At Oldfield Primary in Greenford, another school visited by Councillor Nagpal, headteacher James McCormack told her he was 'delighted' with its Ofsted rating of 'Good' awarded in March. He added: "The main thing that got us ready was really revamping our curriculum, making sure that it was relevant for the children of Ealing."

'TERRIFIC EXAMPLES'

"I was impressed by what I saw and was told at both schools," said Councillor Nagpal. "They are both terrific examples to everyone of what can be achieved for our children. I look forward to seeing our schools build on this success – giving all pupils the best start in life." 

Watch a video and read more at aroundealing.com/news/school-standards





Early years specialists

educating children aged 2-7



Key entry points at:
2+ (co-educational Nursery)
4+ (boys only Reception)

A school of options
offering 7+ preparation or seamless transfer to Falcons Prep Richmond

Wraparound care
7.45 am – 5.00 pm
& Holiday Clubs

“The overall achievement of pupils in all areas is excellent”

ISI Inspection Report
January 2022

Visit our website
AND BOOK A TOUR



www.falconschiswick.co.uk
2 Burnaby Gardens, Chiswick, London, W4 3DT
020 8747 8393 | admissions@falconschiswick.co.uk

Are you looking for good quality furniture or electricals?
Or do you have some you want to donate?



We recycle quality unwanted furniture and electricals. We provide paid employment and training to disadvantaged people and excellent quality furniture at fantastic prices to you. Visit our stores today!

trinity
HOME + PEOPLE + JOB

Hayes: 0208 797 9505
3-7 Willow Tree Lane, UB4 9BB
www.wearetrinity.org.uk
[facebook.com/trinityfurniturestore](https://www.facebook.com/trinityfurniturestore)

West Acton Primary School



OPEN DAY – visit our EYFS

For Reception 2023 applications

Wednesday 2nd November 2022, 4.00-5.00pm
Wednesday 23rd November 2022, 9.00-10.00am



For further information please contact:
West Acton Primary School,
Noel Road, Acton, W3 0JL.
Tel: 0208 992 3144
Email: admin@west-acton.ealing.sch.uk
www.westactonprimaryschool.org

OFSTED JANUARY 2020
West Acton continues to be a GOOD school. Pupils said that their teachers are caring. Parents and carers like the inclusivity and diversity at the school.



Come and visit us at our upcoming Open Days or arrange a personal tour



Nursery

Tuesday 11th October
9.00am - 11.00am



Primary

Wednesday 12th October
9.00am - 11.00am



Secondary

Tuesday 20th September
5.30pm - 7.30pm



6th Form

Wednesday 12th October
5.30pm - 8pm

The Principal welcomes you to his coffee mornings on 27th & 29th
September and 4th & 6th October 2022 from 9.00am to 10.30am
(Please call us to book your place)

Woodlands Academy



Your Local Primary & Nursery School in Ealing



Fantastic New Library & Resources



Caring & Nurturing



Forest School & Outdoor Learning



Places Available

www.woodlands.ealing.sch.uk

@woodlandsschoolealing @WoodlandsW13

FEATHERSTONE HIGH SCHOOL



4 MEDICAL STUDENTS CLASS OF 2022

BE PART OF AN EXCITING FUTURE

PAID APPRENTICESHIP MANAGEMENT CONSULTANT



BEN
HEAD BOY

"FHS IS A GREAT SCHOOL WITH SUPPORTIVE TEACHERS."



OPEN EVENING
29TH
SEPTEMBER

DILPREET D*D, D*



26% A LEVEL GRADES: A*- A
60% A LEVEL GRADES: A*- B

63% OF BTECS WERE AWARDED AT DISTINCTION* OR DISTINCTION

www.featherstonehigh.ealing.sch.uk

Montague Way, Southall, UB2 5HF

@featherstonehigh @FeatherstoneHS

A healthier start in life

Children in England tend to eat far more sugar than their recommended daily amount and around a third are classed as overweight – but local programmes are doing their best to combat these problems.

Nearly a third of children in England aged between two and 15 years old are overweight or obese, according to the Health and Social Care Information Centre. Children and young people are generally becoming overweight earlier and staying overweight for longer.

And, according to government research, children are consuming half their recommended maximum daily intake of sugar at breakfast time; and by the end of the day have had more than three times the healthy limit.

In response to this, Sugar Smart was set up. It is a nationwide campaign run by the charity Sustain; and Ealing Council's public health team works with the NHS Ealing Early Start team to make our borough a 'sugar smart borough'.

Recently, visits to primary schools have been spreading the message to help the schools, and families, reduce sugar consumption in everyday diets.

Local organisations and companies are also being encouraged to become sugar

smart, too, to raise awareness in adults. If you create three or more 'pledges', you will receive certification – a pledge could be as easy as having a water-only drink policy or displaying sugar fact posters around your workplace. Visit www.sugarsmartuk.org/get_involved for more information.

'FORM HEALTHY HABITS FOR A LIFETIME'

Councillor Josh Blacker, the council's cabinet member for healthy lives, said: "In Ealing, we are aiming to increase the number of Sugar Smart sign-ups locally. With obesity on the rise and a high percentage of children being admitted to hospital with tooth decay, it is important we work together to raise awareness. The aim of making these small changes is to help children form healthy habits for a lifetime – and adults to think about their own diets, too."

ALFIE IS BACK

Meanwhile, the Active Living Fun food In Ealing (ALFIE) programme in Ealing

is doing all it can to support those families with children aged between five and 13 who have been identified as being above a healthy weight.


It is back in full swing after being interrupted by COVID and runs fun and interactive workshops that focus on healthy eating and nutrition, including cooking clubs; alongside physical activities that help improve fitness and build confidence.

Find out more at aroundealing.com/news/alfie-is-back

HEALTHY START SCHEME

Healthy Start is a government-funded scheme which gives eligible pregnant women, or those with children under four years old and on benefits, access to a pre-paid card to purchase nutritious foods.

If eligible, you are entitled to use the card to buy fruit, vegetables, lentils/pulses, cow's milk and infant formula, as well as qualify for free vitamins.

Find out more about the scheme at aroundealing.com/news/healthy-start-scheme 



GREENFORD HIGH SCHOOL LEARNING TO SUCCEED

OPEN EVENING

Thursday 6th October 2022 5pm - 8pm

Come and visit our high-achieving, hugely over-subscribed community school.

- Consistently in top 5% in UK for student progress over last 10 years with a full, flexible and balanced curriculum
- Over 200 Greenford students go on to university every year, many to Russell Group universities and some to Oxbridge and America
- Strong commitment to extra-curricular activities including sport, music and trips

Headteacher Mia Pye will talk to parents at 5pm, 6pm and 7pm in the Hall.

If you would like to visit the school during the working day, please see our website or phone 020 8578 9152 for a list of available tours. Please note that there is no parking on the school site except for disabled visitors.

📍 Lady Margaret Road, Southall UB1 2GU

🌐 www.greenford.ealing.sch.uk 🐦 @ghsofficial

The Edward Betham CofE Primary School



Wednesday 21st September

Tuesday 18th October

Tuesday 15th November

Open Mornings

Tuesday 4th October

Wednesday 2nd November

Tuesday 22nd November

Wednesday 12th October

Thursday 10th November

9:45 - 10:30am

Edward Betham is a Voluntary-Aided Church of England Primary School for children aged 3-11 years. Please read our SIAMS ('Outstanding') and Ofsted ('Good') inspections and visit us to get a sense of our community school, in which we work positively with parents and carers to serve our pupils from many cultural backgrounds and faiths. You will be made welcome!

If your child is due to start school in September 2023, come and see our learning in action during one of our open mornings. **Please contact the school office to reserve a place: 020 8578 8928.**



Faith, hope and love; these three things will last forever, and the greatest of these is love.

1 Corinthians 13:13

The Edward Betham CofE Primary School
admin@edwardbetham.ealing.sch.uk

Oldfield Lane South, Greenford, Middlesex UB6 9JU
www.edwardbetham.ealing.sch.uk

📘 Edward Betham CofE Primary School

020 8578 8928
📷 edwardbetham



Reclaimed, together

A successful collaboration between the council and the local community has transformed parcels of derelict or unloved land into a linked, blossoming green ribbon of public space that snakes through the borough and boasts fruit harvests and wildflower meadows.

Dedicated locals who are part of the Hanwell and Norwood Green Orchard Trail (HANGOT) group have worked with council park rangers on parts of the project for years, as it grew along the route of the Grand Union canal from Osterley lock to the Three Bridges in Southall.

And now, as the council's ambitious climate and biodiversity programme kicks into gear, the trail is offering the perfect example of what can be achieved by working together.

One site along the trail, next to the canal in Hanwell, is called The Piggeries. Back in 2015 the group of HANGOT volunteers, backed by council funding, began work to create a waterside wildlife haven for creatures like hedgehogs, beetles, birds and bats. The result today is a beauty spot with wildflower meadows, wetland space

and, of course, native trees providing fruit foraging for local people – where once stood an unused builders' yard and general eyesore.

Park ranger James Morton explained: "Our philosophy is to work with partners, residents and local organisations to try to manage these places, so they are better for people and better for wildlife.

"The local group here comes here and they do all the regular work – and it is all carbon neutral, with no power tools involved."

'ONLY POSSIBLE WITH HARD WORK OF LOCAL PEOPLE'


The council's multi-million-pound climate action programme includes significant greening and biodiversity projects. Read more at [aroundealing.com/news/action-for-biodiversity](https://www.aroundealing.com/news/action-for-biodiversity)

Greening: 2022-26

- 37,000 trees have been planted since 2018. By 2026, another 50,000 will be planted and, by 2030, 25% of the borough will be covered by tree canopy
- A tree nursery has been set up with the Friends of Horsenden Hill – see [aroundealing.com/news/tree-nursery](https://www.aroundealing.com/news/tree-nursery)
- 10 new parks and open spaces planned, including at Glade Lane, Southall
- 800,000 sq m of land will be given back to nature – the size of 130 football pitches – through rewilding and reintroducing wildlife. For example, a beaver project in Greenford – visit [aroundealing.com/news/bringing-back-beavers](https://www.aroundealing.com/news/bringing-back-beavers)
- 10 new growing spaces will be created in housing estates and new developments – with the first in Acton
- Wildflower meadows created and roadside planting of wildflowers continuing.

Councillor Deirdre Costigan, the council's cabinet member for climate action, said: "Whether it is planting 50,000 trees to help expand our canopy, increasing our meadowlands to boost wildflowers and insects, or supporting walking, cycling and scooting to help create a carbon neutral borough by 2030, we are taking urgent and decisive action now.

"Of course, tackling the climate emergency is only possible with the hard work of local communities, residents and volunteers."

 For the full story and a video, go to [aroundealing.com/news/piggeries-greening](https://www.aroundealing.com/news/piggeries-greening)

Getting to work on jobs plan

Merksha



A revamped and dynamic local economy is the aim of a plan to generate new, well-paid jobs and help lead the borough to a brighter future.

The pandemic hit our borough hard, with higher-than-average rates of furlough, and now the cost-of-living crisis is biting as well. To make matters worse, the borough's unemployment rate of 6.7% is higher than the 4.4% average across England – and also the fourth highest rate among London boroughs; and more than a quarter of those who are working are employed in jobs (26%) paying less than the London Living Wage.

BACKING NEW BUSINESS

Ealing Council's Good Jobs campaign was started last year as a high priority in a bid to start to address these problems. Early on, it targeted the need to support businesses to set up in the borough; and 165 new companies were registered in 2021. Owners will be pleased to know that the success rate of new businesses surviving past their first year is higher in Ealing than

the London average – with nine in every 10 making it through.

One such newcomer is the Ealing Project (see page 20), and its combination of career opportunities with cultural activities is neatly representative of the council's ambition to provide good local jobs while also helping to make our towns a 'destination' we can be proud of and that people want to visit and spend time in. The more people are visiting, the more local businesses can generate money, thrive and grow.

A pioneer fund has been helping a number of local entrepreneurs to grow their business (read more at [aroundealing.com/jobs/](https://www.aroundealing.com/jobs/)).

And young, or small, independent businesses are being encouraged to start up in, or move to, our borough through increasing the affordable space available. Park Royal has become a new Creative Enterprise Zone (see [aroundealing.com/jobs/](https://www.aroundealing.com/jobs/)

[aroundealing.com/jobs/](https://www.aroundealing.com/jobs/)), there will soon be an Innovation District for Greenford, and Southall Manor House is in the process of becoming a centre for business incubation (see page 22).

10,000 NEW JOBS

Council leader Peter Mason said: "We want new and existing businesses to help lead our drive towards a 'new economy' that can help make sure every resident can access a well-paid job, local to them, in a growing economy that keeps more of our money local.

"Indeed, as part of the new Council Plan for the next four years (see page four), we have pledged to help create 10,000 new jobs. Good Jobs is not just a slogan to us."

Specific plans tailored to our towns' individual needs are also being developed – such as the Southall Reset (see page 22) and Visions for Northolt (see [aroundealing.com](https://www.aroundealing.com/)).

Councillor Mason added: "There are challenges, but there is also opportunity. The Elizabeth Line opening in the borough has only added to the potential of our seven towns."

'APPRENTICESHIPS ARE AMAZING'

The council has promised to support 2,000 new apprenticeships between now and 2026, building on the 800 already created over the previous four years.

Merksha, an Ealing resident, is a cultural education partnership apprentice at the council. She was nominated for Apprentice of the Year in the 2022 awards. As part of her job, she has been helping others on their career paths by supporting teachers to upskill and also offer more creative

opportunities at their schools.

"We want to bring more awareness of careers in the arts and culture sector," she said. "A creative career is a bit overlooked, but we want to change that.

"My team is also trying to support artists by providing opportunities such as funding and networking.

"I think apprenticeships are amazing. An apprenticeship can really teach life and transferable skills. You also earn a living while getting a qualification."

'YOU ARE NEVER TOO OLD TO LEARN'

Brent Charles, an apprentice site manager for Durkan at the project to regenerate homes at Sherwood Close in West Ealing, has benefited from an

apprenticeship in his 30s.

"I wanted to become more knowledgeable, competent and marketable," he said. "I also wanted to get technical experience. You are never too old to learn."

As both Merksha and Brent found, there is a wide range of apprenticeships available – from construction to culture.

Find out more about becoming an apprentice yourself – or taking one on if you run a local business – at workealing.com

You can read more about Merksha's and Brent's experiences at aroundealing.com/jobs

'A GREAT ROUTE INTO THE WORKPLACE'

Councillor Bassam Mahfouz, the council's cabinet member for decent living incomes, said: "Off the back of achieving more than 800 apprenticeship opportunities, we are being even more ambitious to provide alternative routes into good, well-paid work for our residents. As part of our plan for good jobs, we are committed to securing 2,000 new diverse apprenticeships, which offer a great route into the workplace or for starting a different career." 



Brent Charles

JOBS FAIRS

After the success of two recent jobs fairs, the council has planned more this autumn. These include one for the health care sector on 20 September at Ealing Town Hall, and another for the hospitality and retail industries.

Keep up-to-date with the latest jobs news by signing up for emails at www.ealing.gov.uk/register and selecting 'employment, skills and training'.

Ealing Project is on the ground floor of the Ealing Broadway Shopping Centre – transforming the dark basement area that used to house nightclubs into a surprisingly roomy and high-ceilinged neighbourhood arts and culture miniplex.

Watch a video at
[aroundealing.com/
 news/ealing-project](https://aroundealing.com/news/ealing-project)



Going underground for a cultural high

The new venue opened this summer and features a three-screen cinema, a café, a bar, community room, a stage for live music performance and space to exhibit art by local artists.

It is more good news for the borough, following hot on the heels of the impressive Act One Cinema in Acton (visit aroundealing.com/news/act-one) and with Ealing Filmworks drawing near too; but Ealing Project aims to be a different kind of place, with multiple uses, after receiving support from Ealing Council for its vision for the site.

FILM, MUSIC AND ARTS

“Ealing Project is the first cinema in central Ealing in more than 14 years, but we want

to be much more than a cinema,” said Nick Vergara – who is director of culture, engagement and partnerships for the Really Local Group. This is the fifth high street regeneration project by Really Local Group, with another five on the horizon.

“Essentially, it is a cultural space based around three main things: Film, music and arts. We’ve got



three cinema screens, totalling over 250 seats. We’ll be doing all the big blockbusters, we’re also reserving a decent portion for local independents and private hires and things like that.

BRINGING LIVE MUSIC BACK

“So, that’s the film side of things, we’ve also got music. We’re bringing a live music venue to Ealing, which is fantastic. The borough is in real need of that.

“It’s got all this amazing musical heritage, with the blues and rock and bhangra.

“Bringing performances back to Ealing is what it really needs. We’ll be able to showcase bands, DJs, steel pan workshops – the lot.

“And then there’s art. We’ve got a

EALING PROJECT

Music | Food | Community



ton of wall space here to exhibit local artists and we'll be working with some of the local festivals."

Community groups and organisations will also be able to hire out space for events and meetings, while people are encouraged to come in to sit at a desk and work with a coffee or just relax.



'A SPACE TO SPEND TIME IN'

"Like all of our venues, it's an open-door policy," said Nick. "We see it as a piece of the public realm in a way, so somewhere where you can go, meet up with some friends; you know, open up a laptop, work for the day; just hang out, meet up with your community group – whatever – go and do a workshop, go and see a film. It's a space that you'd rather spend five or six hours in, rather than just pop in and out of a cinema."

"I went to school in Ealing. I spent loads of my youth here. From being a young person and walking around the area, and wanting to do things related to culture, arts, music, there was never really much. We'd end up having to go to other parts of London, other parts of the UK. And I just think it's really important to bring all that back to Ealing."

"There's so much cultural talent here. There are so many good artists, musicians, film makers from Met Film School, creators from institutions, community groups. This is all about giving them a platform and making sure local people have a place to thrive."

The food and drink served at the venue will also include some from local producers and suppliers.

'A FOCAL POINT'

Councillor Jasbir Anand, the council's cabinet member for thriving communities, welcomed the arrival of Ealing Project. She said: "Our town centres are so important to our borough's cultural and social life and

it's fantastic to see somewhere that can help to foster this in Ealing by offering a focal point for the enormous artistic talent here while also supporting grassroots groups and local businesses in the community. And, of course, it's a new social destination for local people."

Ealing Project opens daily, 10.30am-11pm, in High Street, Ealing (between Marks & Spencer and Costa). Find out more at ealingproject.co.uk

NEW CINEMA NEARLY READY TO ROLL

The Ealing Filmworks development built around the old art deco cinema in Ealing Broadway has been flying up in recent times. And the long-anticipated new cinema itself is due to open this winter.

Filmworks is being set around a new public square and will eventually have an array of shops, restaurants and bars; and the cinema will have eight screens and more than 1,000 seats. It will also include more than 200 new homes.

Keep an eye on aroundealing.com and the winter edition of Around Ealing magazine (out in early December) for more details.

Councillor Shital Manro, the council's cabinet member for good growth, said: "This is a very exciting time. The Elizabeth line opening has made Ealing even more accessible to the rest of London than ever before and this development – as well as providing a fun place to watch the latest movies – is a key part of our plans to regenerate and revitalise the town centre and attract further businesses, jobs and investment."



A reset for Southall

The Southall Reset is a new, four-year programme aimed at supporting its residents and businesses by tackling deep-rooted challenges specific to Southall.

Council leader Peter Mason said: “Residents have told us what needs to change, and we are listening. We’ll be working with the community to improve the area for those living and working here, with ambitions to build on Southall’s vibrant local economy and its reputation as a destination for visitors.

“The council wants to support, encourage, and enable the community

to get involved in shaping Southall.”

Things are already getting under way.

TOWN FORUM AND REGENERATION

This autumn, the council will start to set out a new, community-led regeneration charter for the town. In tandem, also this autumn, a new town forum for Southall is due to be set up to allow residents and businesses to influence

future development and investment.

Keep an eye on [aroundealing.com](https://www.aroundealing.com) for more details.

BOOSTING BUSINESS

More than 300 people went to Southall Manor House during the summer for a day of networking and inspiration at Southall’s first ever business expo.

The free event was organised by Contactus Ealing on behalf of Ealing Council, with the aim of raising the profile of existing businesses and promoting the town as a top destination for new business.

Councillor Shital Manro, cabinet member for good growth, said: “A first for Southall, this event is part of the council’s renewed commitment to support and invest in the area by providing opportunities for the local community to come together and be a part of shaping and supporting Southall’s economic future.”

The expo represented the start of



something special at Southall Manor House, which is earmarked to play a key role in the area's future in the coming years – by helping to nurture local businesses and jobs.

The iconic building, which is packed with history, was extensively and lovingly restored by the council a few years ago and now the council has partnered with Meanwhile Space Social Enterprise to manage it until April 2024. The organisation's expertise is in transforming underused spaces into affordable, flexible places to support local entrepreneurs, start-up businesses and the community in general.

A survey during the summer asked residents for their views and the plan for Southall Manor House's future will be announced soon. As well as workspace for business, it could include training programmes and workshops and an event space with catering facilities for the community.

Councillor Mason said: "The regeneration of Southall Manor House is part of supporting our hardest hit residents by bringing more work opportunities in the area and making the local economy more diverse."

GETTING AROUND

A Southall Active Travel project will create a renewed focus on walking and cycling schemes in the area, to make it easier to get around the area on foot or by bike – which is not just good for your health, but good for

the environment too, and for cutting congestion on the roads.

A cycling and pedestrian bridge is soon to open in Merrick Road – along with turning the disused toilet block into a new cycling café. And, in Uxbridge Road, a modern cycle lane is being created to make it easier, safer and more pleasant for biking along one of the area's key routes.

WALKING, CYCLING AND WORKING OUT

It will help to build on all the good work that Let's Go Southall – funded by Sport England and the council – has been doing to improve local access to sport and exercise.

Earlier this year it played a key role in setting up a Parkrun in Southall Park; and has been creating a Wellbeing Way along Southall Grand Union Canal.

This is transforming the towpaths and walkways to make them more attractive for travelling along on foot and by bike. See more at aroundealing.com/news/active-travel-investment

Let's Ride Southall, meanwhile, is offering regular cycle rides and bike maintenance. The council is supporting it all the way by helping to provide a whopping 1,000 bikes to residents free-of-charge.

Four new outdoor gyms recently opened at Spikes Bridge, Manor House, and Southall parks and also Southall Recreation Ground. They each have equipment specifically

designed for use by people of all ages, backgrounds and abilities. Some even have interactive screens to help people with a tailored workout. And there is even a timetable of regular classes, activities and events available for the gyms. Find out more at aroundealing.com/news/new_free_gyms

'NOT SIMPLY ABOUT NEW FACILITIES'

Councillor Jasbir Anand, cabinet member for thriving communities, said: "It is part of our ongoing work with Let's Go Southall, which is helping us deliver a community-led approach to encourage the residents of Southall to stay healthy and active, and use their parks and green spaces in ways that work for them.

"I know just how strong the sense of community is here in Southall, and that is why we are prioritising and supporting local people to make lasting changes to their lifestyles through a support network and meaningful, personal connections. The programme is not about simply providing new sports facilities or services." 



'It really is a lovely place'

"Finally, I'm now 100% independent", said Ana-Maria after moving into her new council home in Hanwell.

The 25-year-old has suffered with mobility problems since a spinal injury in 2019; and had experienced difficulties in getting around her former home in Acton. But, in May this year, the human resources co-ordinator moved into an apartment in the newly completed Central Square area of the Copley Close estate, which she says has given her 'a new lease of life'.

Central Square is the latest phase of Ealing Council's £100million, multiple-award-winning regeneration of Copley – one of the largest council-led housing redevelopment projects since the late 1970s. It has been built in partnership with the council's housing company Broadway Living, which is helping with one of the biggest council homebuilding programmes in the country.

The 201 homes in Central Square include 85 flats for council tenants, with a further 35 offered at discounted market rent – an affordable rent set at 20% below open market value and restricted to eligible households. Another

33 homes will available as shared ownership. Proceeds from the sale of the remaining 48 homes will be used to subsidise the development of more new social housing.

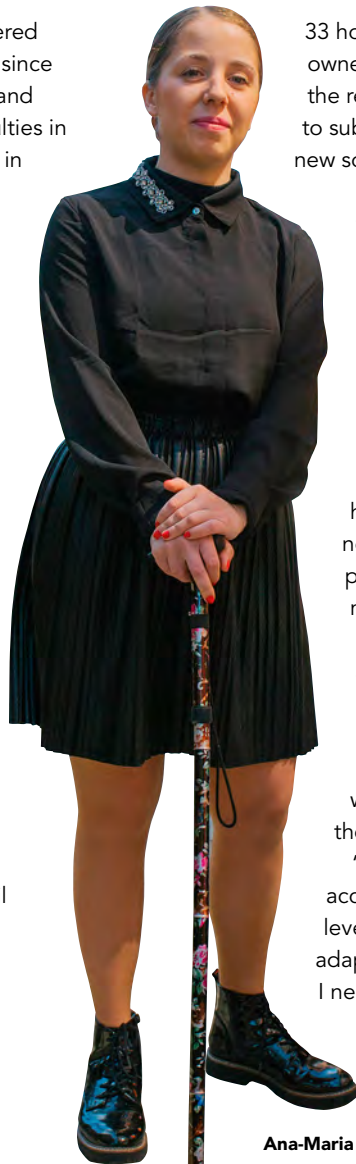
'IT IS PERFECT FOR WHAT I NEED'

A tenth of the homes in Central Square have also been specially adapted for wheelchair users, with extra-wide doorways and plenty of turning space in every room.

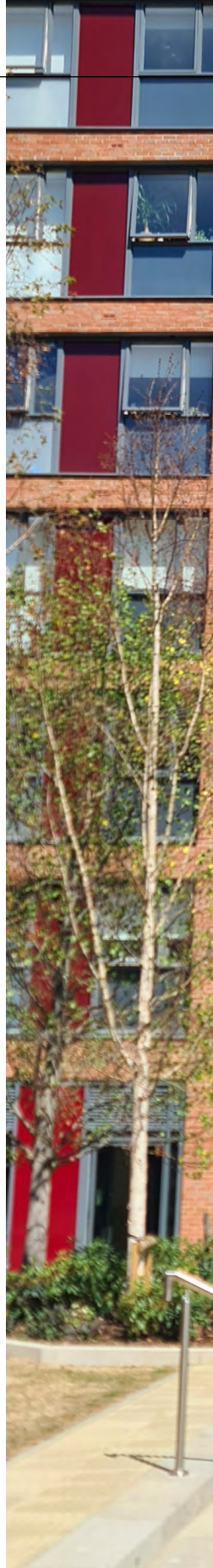
"My disability meant that I relied heavily on my mother whenever I needed the bathroom at my former place, but I'm so happy now with my new home," said Ana-Maria.

"The apartment is so beautiful, and it is such a quiet place to live, but best of all, it has been adapted so that I can get around easily. There is a place to store my wheelchair and my crutches so that they are out of the way.

"The bathroom is so much more accessible for me; it has a new level-access shower and a specially adapted toilet, giving me everything I need to feel more independent. It really is a lovely place – perfect for what I need."



Ana-Maria




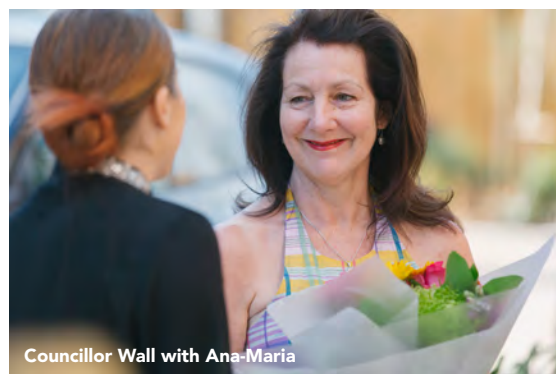
Watch a video at
[aroundealing.com/
 news/central-square](https://aroundealing.com/news/central-square)



THOUSANDS MORE AFFORDABLE HOMES

Councillor Lauren Wall, the council's cabinet member for genuinely affordable homes, visited Ana-Maria. She said: "I'm so pleased to hear that Ana-Maria has settled into her fantastic new apartment.

"In 2018 we promised that we would do all we could to help tackle Ealing's affordable housing crisis. We were delighted to announce in May that, in just four years, we had delivered more than 2,700 new homes to be socially let. We know just how important good quality, affordable housing is to our residents' life chances, and with thousands more waiting for a council home, there is still lots of work to be done. We have a new target of 4,000 more by 2026, which will mean another 4,000 families will have the peace of mind that comes from living in an affordable, permanent home." 



Councillor Wall with Ana-Maria

4,000 more by 2026

One of the biggest challenges our borough faces is a chronic shortage of housing that local people can afford. Average house prices are around 10 times the average salary, while just 10% of privately rented homes are within the budgets of local people on moderate incomes. Yet, the area's great transport links, outstanding schools and beautiful parks mean that more and more people want to live here.

To help reduce the gap between supply and demand, the council is running one of London's biggest council homebuilding programmes. It has recently committed to delivering another 4,000 genuinely affordable homes to let by 2026, both by directly building homes and also by insisting that a proportion of all new homes at private and housing association developments in the borough are socially let. Local residents and key workers will have priority access to these new homes.

“ I
- actually -
UNPACKED



MY BAG”

Novia, aged 13

Do you remember what it was like to be a teenager? Now imagine your family was having difficulties and all you wanted was somewhere safe and stable to stay. Fostering a teenager can be challenging, but it's a hard time for them too. We need you to understand the needs of our young people and be there for them through the highs and lows, to support them on their journey. As a foster carer we will provide you with excellent support and training. We also pay teenage fostering allowances of between £337 to £470 per week for each young person you look after, depending on their age and your experience.

Together we can do this at ealingfosteradopt.co.uk Freephone: **0800 731 6550**
Email: fosteradopt@ealing.gov.uk Facebook: [/ealingfosteradopt](https://www.facebook.com/ealingfosteradopt)



'Just one big family'

"She is better than a mum," said Jefferson as he looked at Julie on a sunny day in the garden when we visited a family with a difference.

Julie Browne and her partner Clive Hughes started fostering Jefferson when he was 15. And then, when he turned 18, he continued to live with them under a little-known scheme with a big impact.

Ealing Shared Lives has been run by Ealing Council for almost 30 years. It places adults who have additional needs with local families – either to live with them or to spend some regular time together.

Like with Jefferson, who is now 23 years old, it can be a full-time arrangement as an alternative to living in a care home. Or, alternatively, carers can help by providing respite care – giving other families a break, whether for a weekend, a day, or even a few hours.

Julie has five cared-for children living with her. Two under the Shared Lives scheme and three being fostered. The youngest is nine years old.

"Knowing that we can make a difference is what drives you on," said

Julie. "And they become part of your family – the youngest ones call us Nan and Grandad, and they all call each other brother and sister.

"A lot of these children have been through hell. You need to let them realise they are needed, wanted and loved."

The road to Shared Lives began years ago via fostering. And, when asked whether she would recommend becoming a Shared Lives carer to others, Julie said: "Yes, I would. But you've got to want to do it and want to make a difference. I enjoy doing it, and being there for people, and having the knowledge that I'm helping.

"We are just one big, mad family," she laughed.

'A CREDIT TO THE COMMUNITY'

Councillor Josh Blacker, the council's cabinet member for healthy lives, said: "Shared Lives carers like Julie are such a credit to the community and we are looking to recruit more. Like her, some

people who have fostered before might be particularly suitable – whether for short respite care or longer-term care in your home. However, you do not need any specific qualifications or experience to be a Shared Lives carer. If you are flexible, committed and caring – and have a spare bedroom – then our team would love to hear from you for a chat. Shared Lives carers are paid and receive ongoing training and support, as well as holidays."

WANT TO FIND OUT MORE?

Visit www.ealing.gov.uk/sharedlives or you can call 020 8825 5166 or 020 8825 6323 or email FitzgeraldV@ealing.gov.uk

Read the full, heart-warming story of Julie and Jefferson at aroundealing.com/news/family



Ealing Half Marathon



The award-winning Ealing Half Marathon is back once again and will take place on Sunday, 25 September 2022.

The popular race, which is endorsed by Ealing Council, is celebrating its 10th year. It will begin in Lammas Park at 9am.

Up to 4,000 runners are expected to take part, along with thousands of spectators and hundreds of volunteers. Many of the runners are raising money for charity.

If you are planning on cheering on the runners, the 13.1-mile course will cover parts of Montpelier, Pitshanger, Central

Ealing and Hanwell before returning to Lammas Park via Uxbridge Road.

ROAD CLOSURES

To ensure the safety of participants and spectators, all the roads that the event passes through will be closed to traffic at some stage during the event.

To minimise any disruption to residents, the race organisers will close roads as the lead runner approaches and attempt to re-open roads no later than 15 minutes after the last runner has passed by in Montpelier, Pitshanger and Central Ealing. All other areas remain closed until the times stated to allow runners to return to Lammas Park safely.

Movement around the course before the race starts will require your

co-operation as course checks are carried out and equipment is put in place.

The first roads will close from 7am on the day of the event and it is anticipated that all roads will reopen by 1pm.

Affected buses that operate in the area will be on diversion from 6.30am until 1pm on 25 September.

MORE INFORMATION

For more information about Ealing Half Marathon or to contact the organisers, visit www.ealinghalfmarathon.com.

For enquiries about road closures, call 020 8825 5000.

If you would like to be one of the 700 volunteers and earn a free place to next year's event, you can register your details at www.ealinghalfmarathon.com/volunteer 

Let's get protected

Get the COVID-19 vaccine

زندگیاں بچائیں۔ ویکسین کے لئے ہاں کہیں۔ اپنی زبان میں ویکسین پر اہم معلومات حاصل کریں

உயிர்களைக் காப்பாற்றுங்கள். தடுப்பூசிக்கு சரி என்று சொல்லுங்கள். தடுப்பூசி பற்றிய முக்கியமானத் தகவல்களை உங்கள் தாய்மொழியில் காணுங்கள்

ਜਿੰਦਗੀਆਂ ਬਚਾਓ। ਵੈਕਸੀਨ ਠੂੰ ਹਾਂ ਕਰੋ।
ਵੈਕਸੀਨ ਬਾਰੇ ਮਹੱਤਵਪੂਰਨ ਜਾਣਕਾਰੀ ਆਪਣੀ ਭਾਸ਼ਾ ਵਿਚ ਪ੍ਰਾਪਤ ਕਰੋ।

જીવન બચાવો. રસી માટે હા કહો.
રસી અંગે મહત્વપૂર્ણ માહિતી તમારી ભાષામાં શોધો

جانہا را نجات دہید. بہ واکسن بلہ بگوئید.
اطلاعات مهم دربارہ واکسن را بہ زبان خود دریافت کنید

سأهم في إنقاذ الأرواح. وافق على تعاطي اللقاح.
تعرف على معلومات هامة مكتوبة بلغتك الأم عن اللقاح

Sauvez des vies. Faites-vous vacciner.
Obtenez des informations importantes dans votre langue concernant le vaccin.

Nafo Ayu Badbaadiyaa. Oggolow talaalka.
Waxa aad ku heshaa macluumaadka talaalka luuqadaada.

Ratuj ludzkie życie. Powiedz „Tak” szczepionce.
Uzyskaj ważne informacje na temat szczepionki w swoim języku.

To find out information on the vaccine in your language,
visit www.ealing.gov.uk/CovidVaccines

Warmer, not poorer

"I'm really pleased with it. I noticed the warmth in the house was greatly improved immediately."



Maureen (not her real name) was delighted with a total transformation of her Acton home this spring thanks to work carried out under Ealing Council's Green Homes Grant: Local Authority Delivery Scheme. It will keep her warm, cut her energy bills and make her home 'greener' by having to use less gas.

The work was done as part of the west London Green Homes Grant scheme, led by the council on behalf of a consortium of 13 boroughs, and funded by the Department for Business, Energy, and Industrial Strategy. The scheme is focused on providing grants to local, low-income homeowners living in cold and less energy-efficient properties.

Maureen applied for the help after being told about it by a friend.

'I WOULD LOSE WARMTH REALLY QUICKLY'

"My house is old," she said. "It was built in the 1930s and was very, very cold in the winter. It had solid brick

walls with no insulation on three sides, and poor insulation in the loft.

"When my heating was switched off, I would lose the warmth really quickly. Which meant I had to keep it on or get cold, and that becomes expensive.

"But now I've had external wall insulation on all three outside walls, and some improvements in the loft, and now the heat stays in the home. The idea is to cut down on your bills because you don't lose all your heat and don't need to use as much. And that is what I am seeing already.


"The weather was so cold earlier in the year, but I noticed a difference straight away. The house retained heat rather than it all leaking out of the walls."

'I FEEL VERY FORTUNATE'

"And the outside of the house looks fabulous now, too," Maureen continued. "It has been smartly rendered with smooth silicone that is coloured and will never need to be painted again. It can just be hosed down with a jet wash, if it needs a

clean, rather than having to paint it every two years like normal rendering.

"It even keeps your home cooler in the summer, too.

"I feel very fortunate. I've never had anything free in my life, so I couldn't believe my luck. I recently suffered a bad illness and can pick up infections very easily. This work will help enormously, and I feel more secure. Especially with the heating bills rising so much at the moment around the country. I feel like I can look forward to the winter now." 

After an overwhelming response, the Green Homes Grant scheme is currently closed to new applicants. However, the Healthy Homes Ealing helpline is still available to residents and offers energy efficiency advice to those struggling with rising energy bills.

Find out more at
[www.ealing.gov.uk/
healthyhomesealing](http://www.ealing.gov.uk/healthyhomesealing)
or call 0800 083 2265.



Could this put a ceiling on gas?

'Electric wallpaper' using pioneering infra-red technology is being fitted in council homes in Greenford – promising an amazing ability to slash energy bills and carbon emissions.



Ealing Council is running a pilot scheme with energy company NexGen Heating to replace the gas heating in 25 homes with special, warmth-emitting panelling on the ceilings.

If it proves as successful at reducing bills and increasing energy efficiency as expected, it could be added to council homes (and beyond) on a far wider scale.

It is one of several electric-only heating options being trialled by the council as it moves towards greener buildings and the end of gas boilers being installed, or replaced, in its homes from 2023. Another example is the Energiesprong project in South Ealing, where 44 homes are having air source heat pumps installed – which you can read about in our previous article at [aroundealing.com/news/retrofit](https://www.aroundealing.com/news/retrofit)

WHAT IS THIS NEW KIND OF HEATING?

It harnesses two types of cutting-edge technology to make it feel as if you are sitting in the warm glow of the sun's rays, in your own home.

It can be flipped on and off in specific rooms, like a light switch, providing instant heat. So, unlike traditional heating, it does not have to be on throughout the whole house. It can be turned on in the rooms where you are – thus further saving energy and money.

David Leabeater, business development director at NexGen, explained: "Firstly, the panels are made of a wonder-material called graphene, which is a Nobel Prize recognised type of carbon, invented

and produced in the UK, which is ideal for converting electricity into heat.

"Secondly, the infra-red technology – the panels emit this in the form of direct heat. It is essentially light, but being infra-red it has a heating effect, it is literally the warmth you feel when you are sitting out in the sun. We are looking at a highly efficient way of heating homes – not to mention being a cleaner and cheaper alternative to a gas boiler."

NexGen is as thin as wallpaper and is designed to be installed just as easily, typically on ceilings. Installation is intended to be simple and flexible – it could potentially be fitted by decorators in the future – and the technology has a very long lifespan. It can be painted or papered over

Watch a video at
[aroundealing.com/
 news/new-electric-
 heating](https://aroundealing.com/news/new-electric-heating)



initiatives offering solar technology for local homes and there is real potential to offer this kind of joined-up approach to cheaper and greener heating in the future.

David added: "Ealing already has a lot of properties with solar technology so the potential here is great. A home could utilise solar panels in the day and switch to a smart battery overnight – it is a great alternative to using gas.

"We are working with the council and a number of local households to investigate and move towards increasing the use of this technology at scale.

"We want local people to buy into the many benefits as the concept becomes more popular – after all, it can cost half the price of some traditional methods of heating."


'WE HAVE TO BE BOLD'

Gas heating in homes is one of the UK's largest contributors of the harmful carbon emissions damaging our environment. And tackling fuel poverty and the rise in energy bills is also critical. The different electric

technologies being trialled by the council might provide some answers to both of these challenges.

Councillor Deirdre Costigan, the council's cabinet member for climate action, said: "Gas heating causes around a fifth of the UK's harmful emissions, so it simply cannot be ignored. We have committed to stopping installing, or replacing, gas boilers in our council homes by 2023 and, to do that, we have to be bold and look at different ways of securing cheap, efficient and environmentally friendly energy.

"In this cost-of-living crisis, we are doing everything possible to help local people save on their bills, as well as supporting this important transition to greener forms of energy as part of the council's commitment to reaching net zero on carbon emissions by 2030. And NexGen can seemingly tick a lot of boxes on both fronts, so I look forward to seeing how it performs in the trial.

"Hopefully, we will see some real success over the course of the pilot scheme and we can introduce it on a wider scale." 

and has such a low voltage, but such resilience, that you could even hit a nail through it and not notice.

David continued: "The heating from this technology is pretty instant and can be adapted so you can heat specific rooms, or even just part of rooms such as your desk or above the sofa. You can avoid wasting energy and money unnecessarily heating other parts of the home."

OFFERING HOPE FOR THE FUTURE

NexGen heating is at its best when it is used in conjunction with solar panels and smart batteries, and this combination can result in near net zero carbon emissions – and at a far lower cost than traditional heating.

There are already a number of

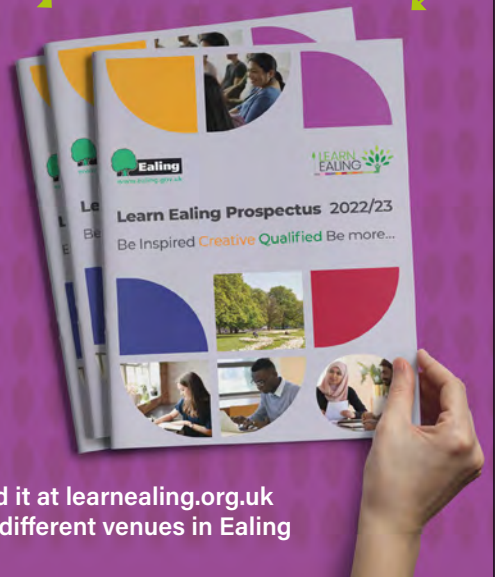
Courses for everyone Learn Ealing's new course prospectus is now here.

We can help you get job-ready, improve your career prospects and support you with life skills.

New courses for 2022/23 include: computer skills, preparing for the film industry, better breathing for better health, understanding autism and many more.

You can also join our **free courses to help you improve your maths skills** such as managing your finances, budget smart - explore savings, cook on a budget and calculate income versus expenditure.

Many of our courses are delivered online or face-to-face in venues across Ealing, so why not pick a course to get started with your learning?



Find it at learnealing.org.uk
or at different venues in Ealing



DEPOT OPEN DAYS DEPOT UNLOCKED

Thursday 22 September – Sunday 25 September

Discover the transport
treasures hidden in our
Depot in Acton Town.

Book online in advance at ltmuseum.co.uk



MAYOR OF LONDON



Supported using public funding by
ARTS COUNCIL
ENGLAND

Registered charity number 1123122

It was Volunteer's Week in the summer. Not only does volunteering help other people in the community – it can also help you, too.

'I love volunteering'

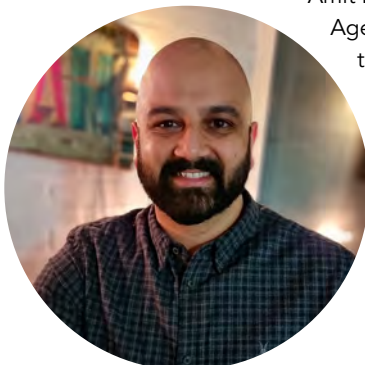
Volunteering was critical to supporting local people during the COVID-19 pandemic. And many new volunteers stepped forward during that time, not least through the Ealing Together group led by the council.

But even outside times of emergency, volunteers play an incredibly important role in our local communities. And the benefits work both ways.

Councillor Jasbir Anand, Ealing Council's cabinet member for thriving communities, said: "As well as a sense of satisfaction at doing something good, it can provide you with new skills, regardless of whether you are working or retired, and also bring increased confidence. But it also has wider mental health benefits. Research suggests that the benefits for older people or those with long-term health conditions may be even more pronounced. These volunteers appear to experience less depression and improved mental wellbeing than their peers."

AGE UK EALING

Age UK Ealing is based at Greenford Community Centre, which is owned by the council. The charity has managed the centre, in Oldfield Lane South, since 2016.



Amit Dhiman

As well as running the community centre, it provides a day service there that supports older people with various levels of need – including early onset dementia and learning difficulties; or simply to help combat loneliness and social isolation.

The charity's volunteers play a key role in all of this, but also help provide a befriending service.

Councillor Aysha Raza, the council's cabinet member for tackling inequality, said: "Volunteers are often a vital part of the social glue that brings our community together – and, like in Age UK Ealing's case, they can be supporting some of the most vulnerable in society. I've seen it for myself."

'CONNECTION AND GENUINE FRIENDSHIP'


Amit Dhiman started at Age UK Ealing during the pandemic as a volunteer telephone befriender. He said: "I got into volunteering during the pandemic, after watching a section on the news that followed a volunteer



Elizabeth Rowell

checking in with their client. It costs me nothing but a weekly commitment and gives me back a rewarding sense of connection and genuine friendship."

'I LOVE VOLUNTEERING'

Elizabeth Rowell, 79, said: "I became a volunteer for Age Concern Ealing – as it was then known – when I took early retirement from the BBC in 1998 and wanted to do something helpful. I love volunteering for Age UK Ealing and spending time with all my wonderful friends here." 

Want to know more?

Find out more about volunteering locally, and read the full story, at aroundealing.com/news/love-volunteering



Finding balance

Falls and fall-related injuries are a common and serious problem for older people. They can lead to injuries, distress and loss of independence.



Strength and balance class

Each year, the NHS in London deals with thousands of fall-related injuries and, nationally, it spends billions of pounds a year on treating those injuries.

In many cases, longer-term effects of falls can mean a greater dependence on social care support in the home or admission to a care home.

Councillor Josh Blacker, Ealing Council's cabinet member for healthy lives, said: "As we age, the chances of suffering a fall increase.

"But you can reduce your risk of having a fall and suffering injury – and Ealing Council works with organisations that can help you do this.

"This includes taking simple tips for safety in the home and doing exercises to improve your core strength and balance, which is vital."

StayActive4Life runs strength and balance classes throughout the borough, on behalf of the council. The sessions are led by trained fitness instructors.

'THERE'S A REALLY NICE SOCIAL ASPECT TO IT'

Peter Kahn, 71, has been attending the StayActive4Life classes across the borough – at Greenford, Northolt and Acton – for almost for four years because of a neurological condition that affects his balance. He said: "I'm a great fan of what they do. I've really noticed that my balance is better and also my confidence in trying things out is improved too. It enables me to get on and do things. The older you get, your body slows down – but it doesn't mean you have to give up."

Pam Julien, 61, goes to Greenford Baptist Church for classes on Mondays and Wednesdays. She joined after seeing how it had helped her mother Ann. Pam said: "Her mobility has really improved. It's very good and I'm challenged by the exercises, too. There's a really nice social aspect to it, as well. It's a fun hour."

Contact StayActive4Life via email at admin@stayactive4life.co.uk or call 07715170207.

Read the full story at [aroundealing.com/news/avoiding-falls](https://www.aroundealing.com/news/avoiding-falls)

Foiling falls

- ✓ Get regular sight and hearing checks
- ✓ Look after your feet, wear properly fitting shoes and slippers
- ✓ At night, keep a torch by your bed, use night lights or leave a light on in the hallway and near the toilet
- ✓ Remove or tape down uneven tiles or carpeting
- ✓ Buy a non-slip bath mat
- ✓ Drink plenty of water
- ✓ Move about – get up for a walk or stretch every 20 minutes or so
- ✓ Try a nearby strength and balance programme. Or try a Tai Chi, gentle yoga or light stretching class - there are some free in community centres.

For more details, visit www.ealing.gov.uk/falls

'I am here to listen'

The mayor of Ealing, Councillor Mohinder Midha, was formally elected in May. Rachael Coutinho met her to find out what motivates the borough's 'first citizen'.

Councillor Midha has been in politics for more than 12 years, serving as a Labour councillor in two wards during that period.

"I have had the privilege of working with the incredibly diverse and vibrant community of Southall in my roles as ward councillor for Dormers Wells and Lady Margaret," said Councillor Midha. "As mayor, I am looking forward to getting to know more about the wider borough and the people who live here. I want to represent the whole community and play a key role in bringing our communities together."

"I am confident that I can help the local people in Ealing. I am here to listen and help wherever I can."

GIVING BACK TO THE COMMUNITY

Giving back to the community has always been important for Councillor Midha in both her work and personal life. She said: "Southall is one of the most deprived areas in the borough.

I am always trying to do more things for the Southall community. I am a member of several associations in Southall, including the Indian Worker Association, and run a ladies' club once a week."

Educating young people is another issue of particular concern for Councillor Midha.

"I am passionate in preparing young minds for the future," she said. "I am a school governor in a few different schools within the borough. One of my favourite parts about being mayor is attending children's awards ceremonies."

HELPING FAMILIES

During her year as mayor, Councillor Midha will hold events to raise money

to support her chosen local charity, Heartlink Ealing.

She said: "This is a charity close to my heart, because South Asians have a high risk for heart disease and diabetes. I hope that I can help support the great work that they do for the community, especially the South Asian people."

The mayor will also continue to don her formal robe and chain to preside over citizenship ceremonies, community meetings, and to chair meetings of the full council, until May 2023. [ae](#)

Read the full story at aroundealing.com/news/mayor-proud-and-honoured-to-serve-community



CONTACT YOUR COUNCILLORS

Details of all councillor surgeries are available at www.ealing.gov.uk/councillors

CENTRAL
GREENFORD



Shahbaz Ahmed

Labour
0754 080 1722
AhmedShah@ealing.gov.uk



Aysha Raza

Labour 0772 031 2035
Aysha.Raza@ealing.gov.uk
Cabinet: Tackling inequality



Sanjai Kohli

Labour
0790 409 5990
KohliS@ealing.gov.uk

DORMERS
WELLS



Kanwal Kaur Bains

Labour
0793 015 8585
BainsKa@ealing.gov.uk



Ranjit Dheer

Labour
0789 422 8032
Ranjit.Dheer@ealing.gov.uk



Mohinder Kaur Midha

Labour 0795 084 2599
MidhaM@ealing.gov.uk
Mayor of Ealing

EALING
BROADWAY



Julian Gallant

Conservative 0780 222 1393
GallantJu@ealing.gov.uk
Leader of second opposition



Mrs Seema Kumar

Conservative
0796 131 7110
Seema.Kumar@ealing.gov.uk



Anthony Young

Conservative
0791 700 7969
Anthony.Young@ealing.gov.uk

EALING
COMMON



Praveen Anand

Labour
0203 612 3587
AnandP@ealing.gov.uk



Jon Ball

Liberal Democrat
0208 810 1078
Jon.Ball@ealing.gov.uk



Connie Hersch

Liberal Democrat
HerschC@ealing.gov.uk

EAST
ACTON



Kate Crawford

Labour
0208 992 9353 (evenings)
Katherine.Crawford@ealing.gov.uk



Stephen Donnelly

Labour 0771 409 3099
DonnellyS@ealing.gov.uk
Cabinet: Inclusive economy



Hitesh Tailor

Labour
0799 063 7183
Hitesh.Tailor@ealing.gov.uk

GREENFORD
BROADWAY



Varlene Alexander

Labour
0748 433 5273
AlexanderV@ealing.gov.uk



Harbhajan Kaur-Dheer

Labour
0782 515 7044
Harbhajan.Dheer@ealing.gov.uk



Anthony Kelly

Labour
0777 174 0912
Anthony.Kelly@ealing.gov.uk

HANGER
HILL



Fabio Conti

Conservative
0781 717 4279
ContiFa@ealing.gov.uk



Gregory Stafford

Conservative
0797 311 9625
Gregory.Stafford@ealing.gov.uk



Athena Zissimos

Liberal Democrat
ZissimosA@ealing.gov.uk

HANWELL
BROADWAY



Yoel Gordon

Labour
0796 078 3825
Yoel.Gordon@ealing.gov.uk



Monica Hamidi

Labour
0737 797 3559
HamidiM@ealing.gov.uk



Polly Knewstubb

Labour
0755 521 1569
KnewstubbP@ealing.gov.uk

LADY
MARGARET



Karam Mohan

Labour
0794 752 2084
Karam.Mohan@ealing.gov.uk



Swaran Padda

Labour
0795 080 6210
Swaran.Padda@ealing.gov.uk



Kamaldeep Sahota

Labour
0741 280 8803
SahotaK@ealing.gov.uk

NORTH
ACTON



Daniel Crawford

Labour
0208 992 9353
Daniel.Crawford@ealing.gov.uk



Hodan Haili

Labour
0757 734 1614
HailiHo@ealing.gov.uk



Blerina Hashani

Labour
0208 825 6833
HashaniB@ealing.gov.uk

NORTH
GREENFORD



Muhammad Iqbal

Labour
0759 594 5843
IqbalMu@ealing.gov.uk



Amarjit Jammu

Labour
0796 075 4646
Amarjit.Jammu@ealing.gov.uk



Shital Manro

Labour 0795 837 6745
ManroS@ealing.gov.uk
Cabinet: Good growth

NORTH
HANWELL



Louise Brett

Labour
0781 691 6808
BrettL@ealing.gov.uk



Claire Tighe

Labour
0785 169 6138
TigheC@ealing.gov.uk



Ray Wall

Labour
0738 344 1885
Ray.Wall@ealing.gov.uk

NORTHFIELD



Paul Driscoll
Labour
0784 932 8223
DriscollP@ealing.gov.uk



Ian Kingston
Labour
0797 038 5225
KingstonI@ealing.gov.uk



Kim Nagpal
Labour
0744 493 5157
NagpalK@ealing.gov.uk

NORTHOLT
MANDEVILLE



Deirdre Costigan
Labour 0793 032 2315
CostiganD@ealing.gov.uk
**Deputy leader &
Cabinet: Climate action**



Miriam Rice
Labour
0741 559 2153
Ricem@ealing.gov.uk



Chris Summers
Labour
0751 987 2341
chris.summers@ealing.gov.uk

NORTHOLT
WEST END



Bassam Mahfouz
Labour 0794 910 4656
Bassam.Mahfouz@ealing.gov.uk
Cabinet: Decent living incomes



Dee Martin
Labour
0778 887 2191
Dee.Martin@ealing.gov.uk



Lauren Wall
Labour 0752 545 2812
Lauren.Wall@ealing.gov.uk
Cabinet: Genuinely affordable homes

NORWOOD
GREEN



John Martin
Labour
0793 095 6902
MartinJ@ealing.gov.uk



Ghulam Murtaza
Labour
0790 350 2566
MurtazaG@ealing.gov.uk



Tarept Sidhu
Labour
0744 800 2067
SidhuT@ealing.gov.uk

PERIVALE



Munir Ahmed
Labour
0758 242 8643
Munir.Ahmed@ealing.gov.uk



Tariq Mahmood
Labour
0795 731 3079
Tariq.Mahmood@ealing.gov.uk



Charan Sharma
Labour
0775 764 5967
Charan.Sharma@ealing.gov.uk

PITSHANGER



Rima Baaklini
Labour
0737 529 5923
BaakliniR@ealing.gov.uk



Ilayda Nijhar
Labour
0744 448 9453
NijharI@ealing.gov.uk



Ben Wesson
Labour
0750 242 8483
WessonB@ealing.gov.uk

SOUTH
ACTON



Callum Anderson
Labour
0781 612 4603
AndersonC@ealing.gov.uk



Josh Blacker
Labour 0793 477 3372
BlackerJ@ealing.gov.uk
Cabinet: Healthy lives



Yvonne Johnson
Labour
0208 993 4166
JohnsoY1@ealing.gov.uk

SOUTHALL
BROADWAY



Sarfraz Khan
Labour
0740 466 5858
KhanSar@ealing.gov.uk



Kamaljit Kaur Nagpal
Labour 0744 848 5200
NagpalKK@ealing.gov.uk
Cabinet: A fairer start

SOUTHALL
GREEN



Jasbir Anand
Labour 0794 920 2851
AnandJ@ealing.gov.uk
Cabinet: Thriving communities



Kamaljit Dhindsa
Labour
0796 150 5808
Kamaljit.Dhindsa@ealing.gov.uk



Peter Mason
Labour 0781 149 4042
Peter.Mason@ealing.gov.uk
Leader of Ealing Council

SOUTHALL
WEST



Surinder Kaur Jassal
Labour
0798 4717 291
JassalS@ealing.gov.uk



Faduma Mohamed
Labour
0750 611 0026
MohamedF@ealing.gov.uk

SOUTHFIELD



Gary Busuttill
Liberal Democrat
0798 544 3860
BusuttillG@ealing.gov.uk



Gary Malcolm
Liberal Democrat 0781 320 5218
Gary.Malcolm@ealing.gov.uk
Leader of the opposition



Andrew Steed
Liberal Democrat
0773 664 9664
Andrew.Steed@ealing.gov.uk

WALPOLE



Grace Quansah
Labour
0736 181 2763
QuansahG@ealing.gov.uk



Binda Rai
Labour
0752 238 8741
Binda.Rai@ealing.gov.uk



Gareth Shaw
Labour
0778 991 4379
Gareth.Shaw@ealing.gov.uk

The Ellen Wilkinson School for Girls

Prospective Parents' Evening

Thursday 15th September 2022

6.00pm - 8.30pm

Head's talk at 6:15pm & 7:30pm

Coffee morning with the Headteacher

9.30am - 11:00am

Tuesday 27th September 2022

Tuesday 4th October 2022

Tuesday 11th October 2022

Places for the coffee mornings are limited and must be booked in advance

For all enquiries please email admissions@ellenwilkinson.ealing.sch.uk

“ ... a culture where pupils thrive and develop as confident young women.”

Ofsted 2019

**Where girls create their future
Year 7 to 13**

Specialist Places Students with an identified natural aptitude in: Music; Drama; Visual Arts; Sports and Modern Foreign Languages may choose to apply for a specialist place.

